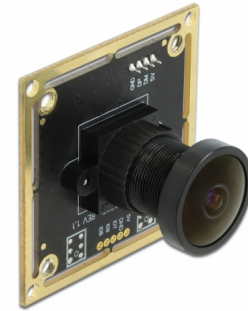


Delock USB 2.0 Camera Module with Wide Dynamic Range 1.92 mega pixel 120° V6 fix focus

Description

This USB 2.0 camera module by Delock offers in a compact construction a high resolution and low power consumption. It is ideally suited for installation in industrial components like **IPCs**, **embedded systems**, **sensors** and in **device manufacture**. The use of a photosensitive sensor with back side illumination (BSI) expands the scope of this module.



WDR - Wide Dynamic Range

It allows the adjustment of the brightest and darkest parts of the image to improve the quality of the still image.

Item no. 96389

EAN: 4043619963898

Country of origin: China

Package: Retail Box

Technical details

- Connector: 1 x 4 pin USB 2.0 pin header female SMT, pitch 1.5 mm
- Pin assignment:
 - Pin 1 - GND
 - Pin 2 - USB D+
 - Pin 3 - USB D-
 - Pin 4 - VCC
- Resolution: 1.92 megapixel
- With optical IR filter
- Maximum resolution: 1920 x 1080
- Automatic image control functions including:
 - Automatic exposure control (AEC)
 - Automatic white balance (AWB)
 - Automatic band filter (ABF)
 - Automatic black-level calibration (ABLC)
- Image quality controls including colour saturation, gamma, sharpness (edge enhancement), lens correction, white pixel canceling, noise canceling, and automatic 50 / 60 Hz luminance detection
- Current consumption:
 - sensor active: 160 mA ± 5 mA @ 1920 x 1080

- Operating voltage: 5 V DC
- Operating temperature: 5 °C ~ 50 °C
- Operating humidity: 0 ~ 80 %
- Sensor size: 1/2.7"
- Fix focus: 10 cm - infinite
- Aperture: F/2,5
- Frame rates:
 - 30 fps @ 1820 x 1080
 - 60 fps @ 1280 x 720
 - 60 fps @ 800 x 600
 - 120 fps @ 640 x 480
 - 120 fps @ 320 x 240
- Dimensions (LxWxH): ca. 38 x 38 x 29 mm

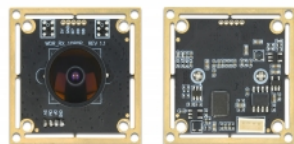
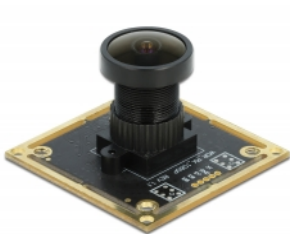
System requirements

- PC with UVC support
- Linux Kernel 2.6.15 and above with Video4Linux
- Windows 7/7-64/8.1/8.1-64/10/10-64
- DirectX 9.0c or above

Package content

- Camera Module

Images



| | |
|-------------------|---|
| Operation system: | Windows 8.1 64-Bit Windows 8.1 32-Bit Windows 7 64-Bit Windows 7 32-Bit ex Linux Kernel 2.6.x ex Mac OS 10.4.8 ex Android 4.0 Windows 10 32-Bit Windows 10 64-Bit |
|-------------------|---|

Interface

| | |
|------------|----------------------|
| connector: | 1 x WTB 1.5 mm Pitch |
|------------|----------------------|

Technical characteristics

| | |
|----------------------------|--|
| Operating voltage: | 5 V DC |
| Operating temperature: | -20 °C ~ 60 °C |
| Maximum screen resolution: | 1080p (1920 x 1080) |
| Sensor Size: | 1/2.7" |
| Current consumption: | 130 mA |
| Resolution: | 2.1 megapixel up to 1920 x 1080 @ 30 Hz |
| Signal noise ratio (SNR): | 38.9 dB |
| Frame rate: | 30 fps @ 1920 x 1080, 1280 x 800, 1280 x 720, 1024 x 768, 840 x 480, 640 x 360, 640 x 480, 352 x 288 |
| Fixed focus: | 10 cm to infinity |

Physical characteristics

| | |
|---------|---------|
| Length: | 38.0 mm |
| Width: | 38.0 mm |
| Height: | 40.0 mm |