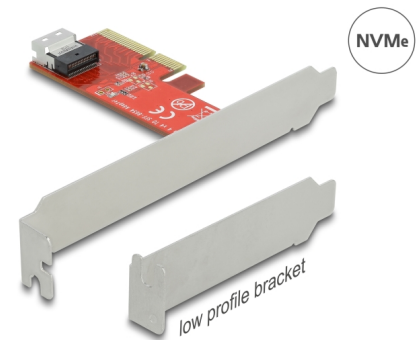


# Delock PCI Express x4 Card to 1 x internal SFF-8654 4i NVMe - Low Profile Form Factor

## Description

This PCI Express card by Delock expands the PC by one SFF-8654 interface. It can be connected to e.g. one SSD with U.2 interface by using an optional cable. The card transmits PCI Express signals using the **NVMe protocol**.



**Item no. 90483**

EAN: 4043619904839

Country of origin: China

Package: Box

## Technical details

- Connectors:
  - 1 x 38 pin SFF-8654 4i female
  - 1 x PCI Express x4, V4.0
- Data transfer rate up to 64 Gbps
- 1 x LED for attendance
- Bootable, ex UEFI version 2.3.1
- Supports NVM Express (NVMe) 1.2

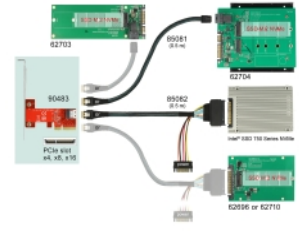
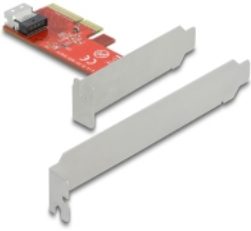
## System requirements

- Linux Kernel 3.12 or above
- Windows 8.1/8.1-64/10/10-64/11
- PC with one free PCI Express x4 / x8 / x16 / x32 slot

## Package content

- PCI Express card
- Low profile bracket
- User manual

## Images



### General

Function:	NVM Express (NVMe)
Supported operating system:	Linux Kernel 3.12 or above Windows 10 32-Bit Windows 10 64-Bit Windows 8.1 32-Bit Windows 8.1 64-Bit

### Interface

Connector 1:	1 x 38 pin SFF-8654 4i female
Connector 2:	1 x PCI Express x4, V3.0

### Technical characteristics

Data transfer rate:	up to 64 Gbps
---------------------	---------------