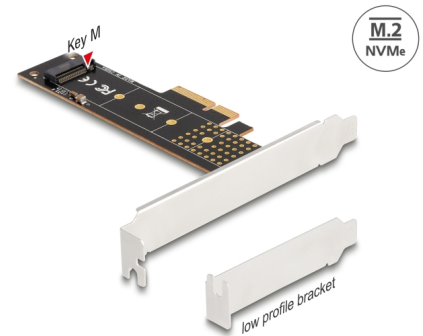


# Delock PCI Express x4 Card to 1 x internal NVMe M.2 Key M 110 mm - Low Profile Form Factor

## Description

This PCI Express card by Delock expands the PC by one M.2 slot. One M.2 module in **22110, 2280, 2260, 2242 or 2230** format can be connected.



**Item no. 89836**

EAN: 4043619898367

Country of origin: China

Package: Retail Box

## Technical details

- Connectors:  
internal:  
1 x 67 pin M.2 key M slot  
1 x PCI Express x4, V4.0
- Interface: PCIe
- Supports M.2 modules in format 22110, 2280, 2260, 2242 and 2230 with key M or key B+M based on PCIe
- Maximum height of the components on the module: 1.5 mm, application of double-sided assembled modules supported
- 1 x LED indicator
- Supports NVM Express (NVMe)
- Bootable, ex UEFI version 2.3.1
- Supports S.M.A.R.T.
- Supports TRIM

## System requirements

- Linux Kernel 5.11 or above
- Windows 8.1/8.1-64/10/10-64/11
- Windows Server 2019
- PC with one free PCI Express x4 / x8 / x16 / x32 slot

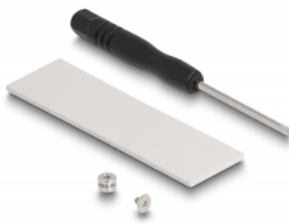
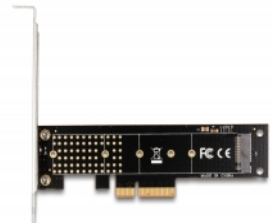
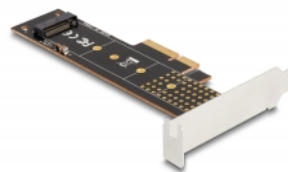
---

## Package content

- PCI Express card
- Low profile bracket
- Screwdriver
- Mounting material
- Thermal conductive pad
- User manual

---

## Images



## General

Form factor:	Low Profile
Function:	Bootable, ex UEFI 2.3.1 TRIM S.M.A.R.T.
Supported operating system:	Windows 10 32-Bit Windows 10 64-Bit Windows 8.1 32-Bit Windows 8.1 64-Bit Windows Server 2019 Windows 11 Linux Kernel 5.11 or above
LED indicator:	1 x
Slot:	PCIe
Supported module:	M.2 modules in format 22110, 2280, 2260, 2242 and 2230 with key M or key B+M based on PCIe
Maximum height of the components on the module:	1.5 mm application of double-sided assembled modules supported

## Interface

Internal:	1 x 67 pin M.2 key M slot 1 x PCI Express x4, V4.0
-----------	---