

# Delock GSM / UMTS / LTE Antenna con SMA maschio 2 dBi omnidirezionale fissata con cavo di collegamento RG-174 2,5 m all'esterno nero

## Descrizione

Questa antenna Delock consente l'uso di varie bande LTE, GSM e UMTS all'interno e all'esterno. È completamente compatibile con LTE, GSM, UMTS, ZigBee 902/928 MHz, DECT, Z-Wave 908/921 MHz, NB-IoT.



**Articolo n. 89613**

EAN: 4043619896134

Paese di origine: China

Pacchetto: Retail Box

## Dettagli tecnici

- Connettore: 1 x SMA maschio
- LTE, GSM, UMTS, Z-Wave 908/921 MHz, ZigBee 902/928 MHz, DECT, NB-IoT
- Gamma di frequenza:  
900 - 1800 MHz  
1900 - 2100 MHz
- Guadagno antenna: 2 dBi
- Impedenza: 50 Ohm
- VSWR: 2,0
- Polarizzazione: lineare
- Temperatura di esercizio: -40 °C ~ 85 °C
- Colore: nero
- Cavo: coassiale
- Tipo di cavo: RG-174
- Colore del cavo: nero
- Diametro cavo: ca. 2,9 mm
- Attenuazione cavo: 1,5 dB @ 1,5 GHz per metro
- Raggio di curvatura minimo: 10,5 mm
- Lunghezza cavo con connettori: ca. 2,5 m
- Lunghezza antenna compresa base magnetica: ca. 22,0 cm
- Diametro Base magnetica: ca. 29,5 mm

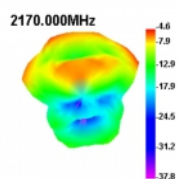
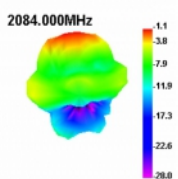
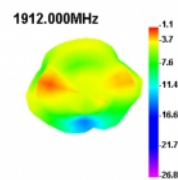
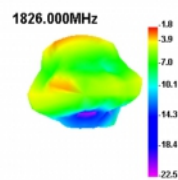
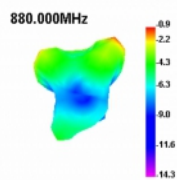
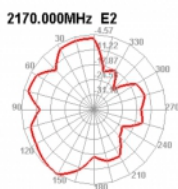
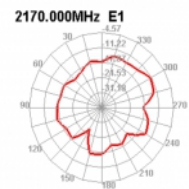
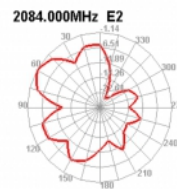
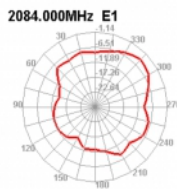
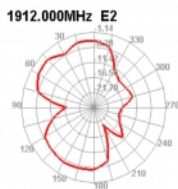
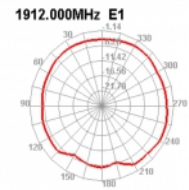
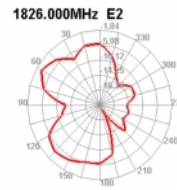
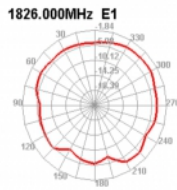
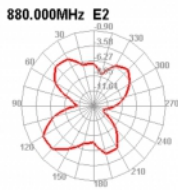
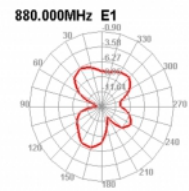
## Requisiti di sistema

- Dispositivi con una porta SMA femmina libera

## Contenuto della confezione

- Antenna

## Immagini



## General

Mounting type:	magnetic
Suitable for outdoor:	Si

## Interface

connector:	1 x SMA maschio
------------	-----------------

## Technical characteristics

Frequency range:	1900 - 2100 MHz 900 - 1800 MHz
Antenna gain:	2 dBi
Impedance:	50 Ω
Temperatura di esercizio:	-40 °C ~ 85 °C
Polarisation:	linear
VSWR:	2,0

## Physical characteristics

Antenna type:	omnidirezionale
Antenna length incl. magnetic base:	22,0 cm
Cable category:	coassiale
Cable type:	RG-174
Cable attenuation:	1.5 dB @ 1.5 GHz per meter
Cable colour:	nero
Cable length incl. connector:	2,5 m
Smallest bending radius:	10,5 mm
Colour:	nero