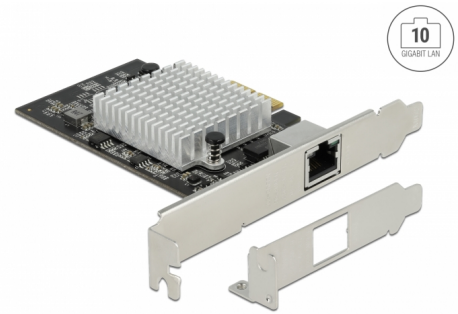


# Delock PCI Express x2 Card 1 x RJ45 10 Gigabit LAN AQC113CS

## Description

This PCI Express card by Delock offers a network port with a data transfer rate up to **10 Gbps** over conventional Cat.6 or Cat.6A copper cables. With the **NBASE-T** technology additional speeds of **2.5 Gbps and 5 Gbps** are available. This allows higher transmission rates than 1 Gbps, when a 10 Gbps connection is not possible with the existing cable.



**Item no. 89528**

EAN: 4043619895281

Country of origin: China

Package: Box

## Technical details

- Connectors:  
external: 1 x 10 Gigabit LAN RJ45 jack  
internal: 1 x PCI Express x2, V3.0
- Chipset: Marvell AQC113CS
- Data transfer rate:  
Ethernet up to 10 Mbps  
Fast Ethernet up to 100 Mbps  
Gigabit Ethernet up to 1 Gbps  
NBASE-T with up to 2.5 Gbps and 5 Gbps  
10 Gigabit Ethernet up to 10 Gbps  
PCI Express x2 up to 16 Gbps
- Supports IEEE 802.3az (Energy Efficient Ethernet)
- Supports 16k Jumbo Frames
- Supports IEEE 802.1Q Virtual LAN (VLAN)
- Supports PXE
- LED indicator for link and activity

## System requirements

- Linux Kernel 3.10 or above
- Windows 8.1/8.1-64/10/10-64
- PC with one free PCI Express x2 / x4 / x8 / x16 / x32 slot

---

## Package content

- PCI Express card
- Low profile bracket
- Driver CD
- User manual

---

## Images



## General

Supported operating system:	Linux Kernel 5.8.0 or above Windows 10 32-Bit Windows 10 64-Bit Windows 8.1 32-Bit Windows 8.1 64-Bit
-----------------------------	---

## Interface

External:	1 x 10 Gigabit LAN RJ45 jack
Internal:	1 x PCI Express x2, V3.0

## Technical characteristics

Chipset:	Aquantia AQC113CS
Data transfer rate:	Ethernet up to 10 Mbps Fast Ethernet up to 100 Mbps Gigabit Ethernet up to 1 Gbps NBASE-T (Draft) with up to 2,5 Gbps and 5 Gbps Gigabit Ethernet up to 10 Gbps

## Physical characteristics

Slot bracket:	standard Low Profile
---------------	-------------------------