

Delock Antena WLAN 802.11 ac/a/h/b/g/n N mamă 6 - 8 dBi 28 cm omnidirecțională, montare fixa pe stalp alb în aer liber

Descriere scurta

Această antenă WLAN de la Delock permite utilizarea diferitelor benzi WLAN în interior și în exterior.



Nr. 89440

EAN: 4043619894406

Țara de origine: Taiwan,
Republic of China

Pachet: Poly bag

Detalii tehnice

- Conector: 1 x N mamă
- Interval frecvență:
2,4000 - 2,4835 GHz
5,1500 - 5,8750 GHz
- Amplificare antenă: 6 - 8 dBi
- Impedanță: 50 Ohm
- VSWR: 1,5
- Polarizare: verticală
- Lățime fascicul orizontal HBW: 360°
- Lățime fascicul vertical VBW: 23°
- Putere de transmisie: max. 100 W
- Temperatură în stare de funcționare: -40 °C ~ 80 °C
- Material carcasă: GFRP
- Culoare: alb
- Greutate: cca 120 g
- Dimensiuni (LxD): aprox. 282 x 22,5 mm

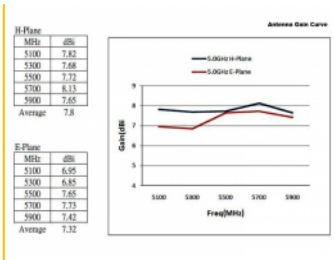
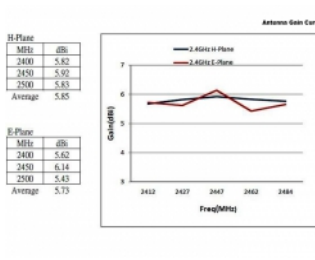
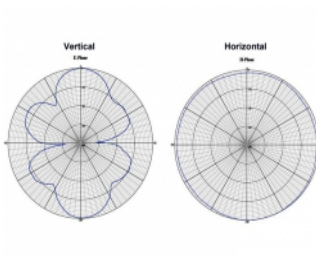
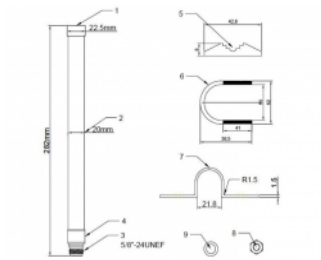
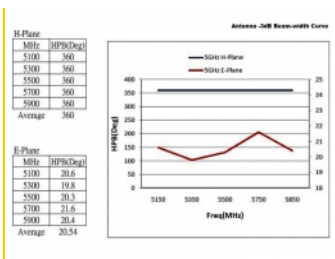
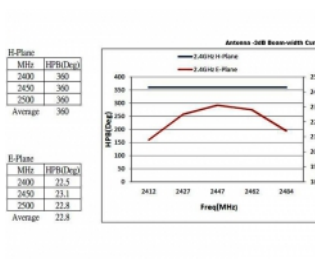
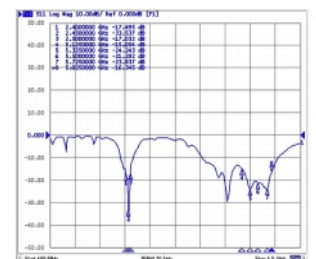
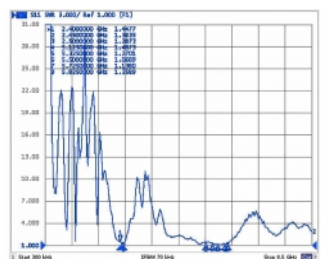
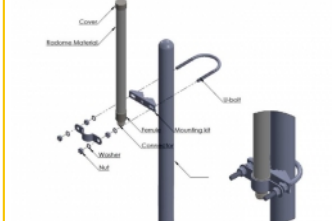
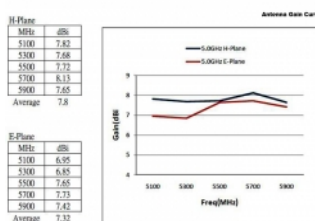
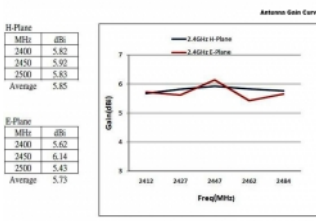
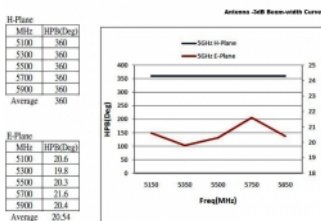
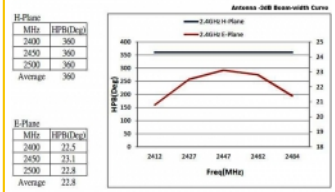
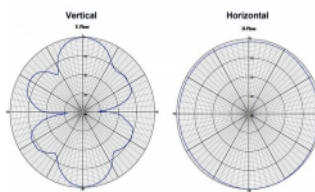
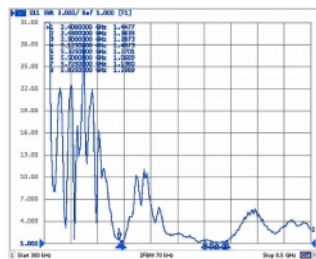
Cerinte de sistem

- Dispozitiv cu un portsau N liber

Pachetul contine

- Antenă
- Kit montare pe stâlp

Imagini



General

Mounting type:	pole
Suitable for outdoor:	Da

Technical characteristics

Frequency range:	2.4000 GHz - 2.4835 GHz 5,1500 - 5,8750 GHz
Antenna gain:	6 - 8 dBi
Beam width horizontal:	360 °
Beam width vertical:	23 °
Temperatură în stare de funcționare:	-40 °C ~ 80 °C
Polarisation:	vertical
Power handling:	max. 100 W
VSWR:	1,5

Physical characteristics

Antenna type:	omnidirecțională antena tijă
Material carcasă:	GFRP
Weight:	120 g
Dimensions (LxØ):	282,0 x 22,5 mm