

Delock WLAN 802.11 ac/a/h/b/g/n Anténa N samice 6 - 8 dBi 28 cm všesměrová fixní sloupová montáž bílá venkovní

Popis

Tato WLAN anténa od Delocku umožňuje použití různých WLAN šířek uvnitř i venku.



Číslo produktu 89440

EAN: 4043619894406

Země původu: Taiwan,
Republic of China

Balení: Poly bag

Technické detaily

- Konektor: 1 x N samice
- Frekvenční rozsah:
2,4000 - 2,4835 GHz
5,1500 - 5,8750 GHz
- Anténní zisk: 6 - 8 dBi
- Impedance: 50 Ohm
- VSWR: 1,5
- Polarizace: vertikální
- HBW horizontální vyřazovací úhel: 360°
- VBW vertikální vyřazovací úhel: 23°
- Vysílací výkon: max. 100 W
- Provozní teplota: -40 °C ~ 80 °C
- Materiál pouzdra: GFRP
- Barva: bílá
- Váha: cca. 120 g
- Rozměry (DxH): cca. 282 x 22,5 mm

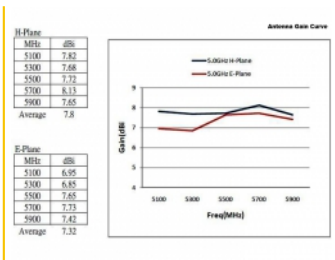
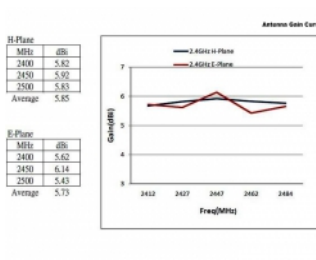
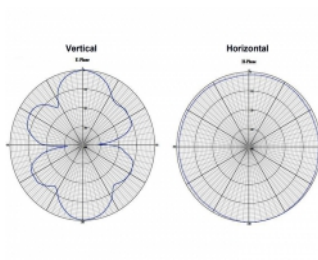
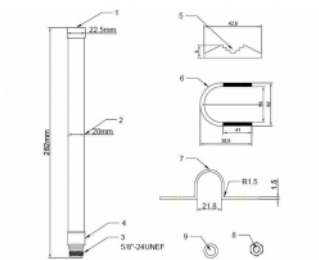
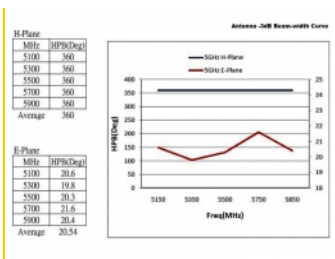
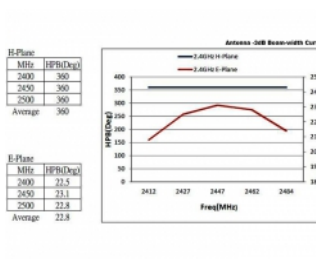
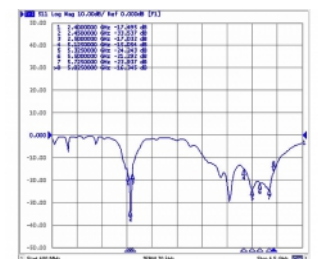
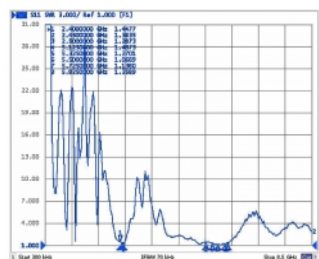
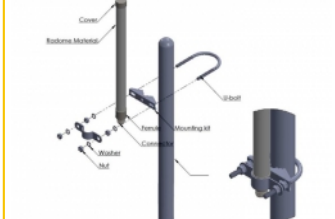
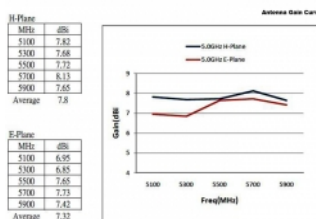
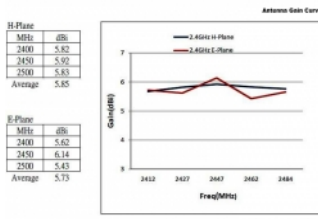
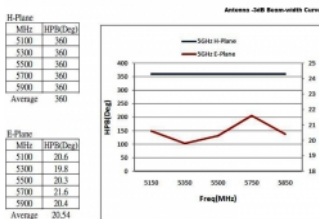
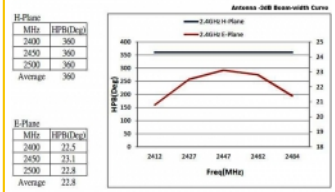
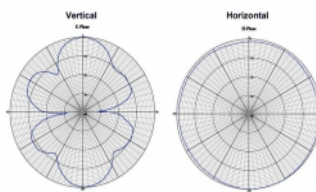
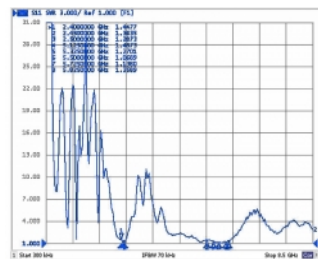
Systemové požadavky

- Zařízení s volným přípojemnebn N

Obsah balení

- Anténa
- Montážní sada

Příslušenství



General

| | |
|-----------------------|------|
| Mounting type: | pole |
| Suitable for outdoor: | Yes |

Technical characteristics

| | |
|------------------------|--|
| Frequency range: | 2,4000 GHz - 2,4835 GHz 5,1500 - 5,8750 GHz |
| Antenna gain: | 6 - 8 dBi |
| Beam width horizontal: | 360° |
| Beam width vertical: | 23° |
| Provozní teplota: | -40 °C ~ 80 °C |
| Polarisation: | vertikal |
| Power handling: | max. 100 W |
| VSWR: | 1,5 |

Physical characteristics

| | |
|-------------------|-----------------------------|
| Antenna type: | všesměrová tyčová anténa |
| Materiál pouzdra: | GFRP |
| Weight: | 120 g |
| Dimensions (LxØ): | 282,0 x 22,5 mm |