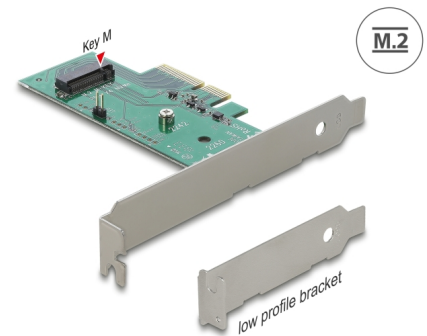


Delock PCI Express x4 Card > 1 x internal NVMe M.2 Key M 80 mm - Low Profile Form Factor

Description

This PCI Express card by Delock expands the PC by one M.2 slot. One M.2 module in 2280, 2260 or 2242 format can be connected.



Item no. 89370

EAN: 4043619893706

Country of origin: Taiwan,
Republic of China

Package: Retail Box

Technical details

- Connectors:
internal:
1 x 67 pin M.2 key M slot
1 x PCI Express x4, V4.0
1 x 2 pin pin header for LED
- Interface: PCIe
- Supports M.2 modules in format 2280, 2260 and 2242 with key M or key B+M based on PCIe
- Maximum height of the components on the module: 1.5 mm
application of double-sided assembled modules supported
- Supports NVM Express (NVMe)
- Bootable, from UEFI version 2.3.1
- OS independent, no driver installation necessary

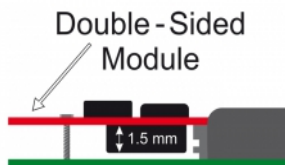
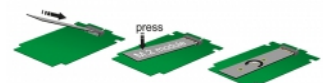
System requirements

- PC with one free PCI Express x4 / x8 / x16 / x32 slot

Package content

- PCI Express card
- Low profile bracket
- 1 x fixing screw
- User manual

Images



- Included:
- 1 x M.2 pin M.2 Key M slot
 - 1 x PCI Express v4, V5.0
 - 1 x LED pin header
 - 1 x screw

