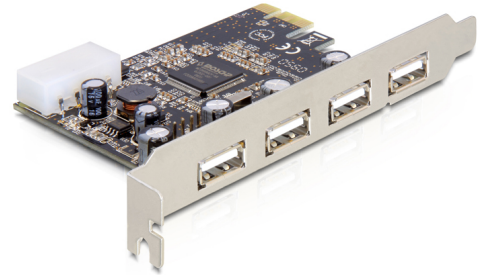


# Delock PCI Express Card > 4 x external USB 2.0

## Description

The Delock PCI Express card expands your PC by four external USB 2.0 ports. You can connect USB devices like e.g. docking station, card reader, external enclosure etc. to the card.



**Item no. 89287**

EAN: 4043619892877

Country of origin: China

Package: Retail Box

## Technical details

- Connector:
  - external:
    - 4 x USB 2.0 type A female
  - internal:
    - 1 x 4 pin USB 2.0 pin header (shared with 1st external port)
    - 1 x Molex 4 pin power connector
    - 1 x PCI Express x1, V1.1
- Chipset: Moschip
- Data transfer rate up to 480 Mb/s
- Supports USB 2.0 EHCI and USB 1.1 OHCI standard
- Plug & Play

## System requirements

- Windows Vista/Vista-64/7/7-64, Linux Kernel 2.6
- PC with one free PCI Express slot
- Power supply with a free Molex power connector

---

## Package content

- PCI Express card USB 2.0
- User manual

---

## Images

