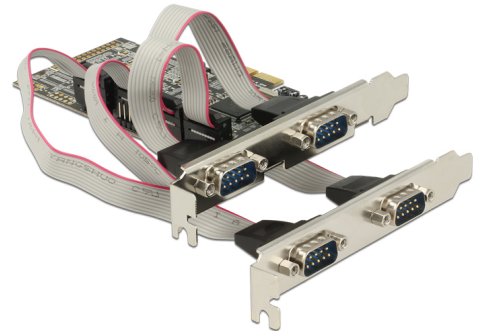


# Delock PCI Express x1 Card to 4 x Serial RS-232

## Description

The PCI Express card by Delock expands a PC by four external serial ports. Different devices such as scanner, printer, mouse etc. can be connected to this card. By using the included low profile brackets, the PCI Express card can be also installed into a Mini-PC.



**Item no. 89178**

EAN: 4043619891788

Country of origin: China

Package: Retail Box

## Technical details

- Connectors:
  - external:
    - 2 x serial RS-232 DB9 male
    - 2 x serial RS-232 DB9 male (separate rear bracket)
  - internal:
    - 1 x PCI Express x1, V1.1
- Chipset: Moschip MCS9904
- Data transfer rate up to 230.4 Kbps
- FIFO: 256 byte
- Compatible with 16C550 UART

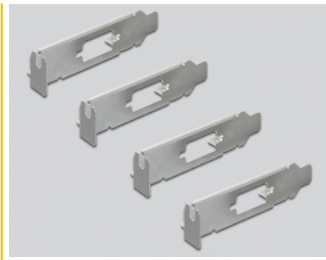
## System requirements

- Windows Server 2003/Server 2003-64
- Windows 7/7-64/8.1/8.1-64/10/10-64/11
- PC with one free PCI Express slot and one rear slot

## Package content

- PCI Express card
- Slot bracket
- 4 x low profile bracket
- Driver CD
- User manual

## Images



## General

Form factor:	Low Profile
Specification:	RS-232 (EIA / TIA) PCIe 1.1
Supported operating system:	Linux Kernel 2.6 or above Windows 10 32-Bit Windows 10 64-Bit Windows 7 32-Bit Windows 7 64-Bit Windows 8 32-bit Windows 8 64-bit Windows 8.1 32-Bit Windows 8.1 64-Bit Windows Server 2003 32-bit Windows Server 2003 64-bit Windows Vista 32-bit Windows Vista 64-bit
Slot:	PCIe

## Interface

External:	1 x Serial RS-232 DB9 plug
Internal:	1 x PCI Express x1, V1.1

## Technical characteristics

Chipset:	ASIX MCS9904
Data transfer rate:	4 x up to 230,4 Kbps
FIFO:	4 x 256 Byte
UART:	16C450 / 16C550 / 16C650

## Physical characteristics

Slot bracket:	Low Profile standard
Colour:	black