

# Delock LTE Antena I-PEX Inc., MHF® I muški 2 - 3 dBi 1.13 10 cm PCB interna samoljepljiva

## Opis

Ova Delock LTE antena omogućuje vam uporabu različitih LTE opsega na otvorenim i u zatvorenim prostorima. U potpunosti je usklađena za GSM, UMTS, LTE, LoRa, NB-IoT, ISM, Bluetooth, WLAN 2,4 GHz, ZigBee, DECT i Z-Wave.



10 cm

### Predmet br. 88988

EAN: 4043619889884

Zemlja podrijetla: Taiwan,  
Republic of China

Pakiranje: Plastična  
vrećica sa zip zatvaračem

## Tehnički podaci

- Priključak: 1 x I-PEX Inc., MHF® I muški
- Frekvencijski opseg:  
690 - 960 MHz  
1710 - 2700 MHz
- GSM, UMTS, LTE, ZigBee, Z-Wave, NB-IoT, WLAN 2,4 GHz, Bluetooth, ISM, DECT, LoRa
- Pojačanje antene: 2 - 3 dBi
- Impedancija: 50 ohma
- VSWR: 1,5
- Način ugradnje: samoljepljiva
- Radna temperatura: -10 °C ~ 55 °C
- Tip kabela: koaksijalni
- Vrsta kabela: 1.13
- Boja kabela: siv
- Promjer kabela: oko 1,13 mm
- Slabljenje kabela: 3,2 dB @ 2,4 GHz po metru
- Najmanji polumjer savijanja: 4,5 mm

- Duljina zajedno s priključkom (L): oko 10 cm
  - Mjere (DxŠxV): oko 96,0 x 14,0 x 0,9 mm
- 

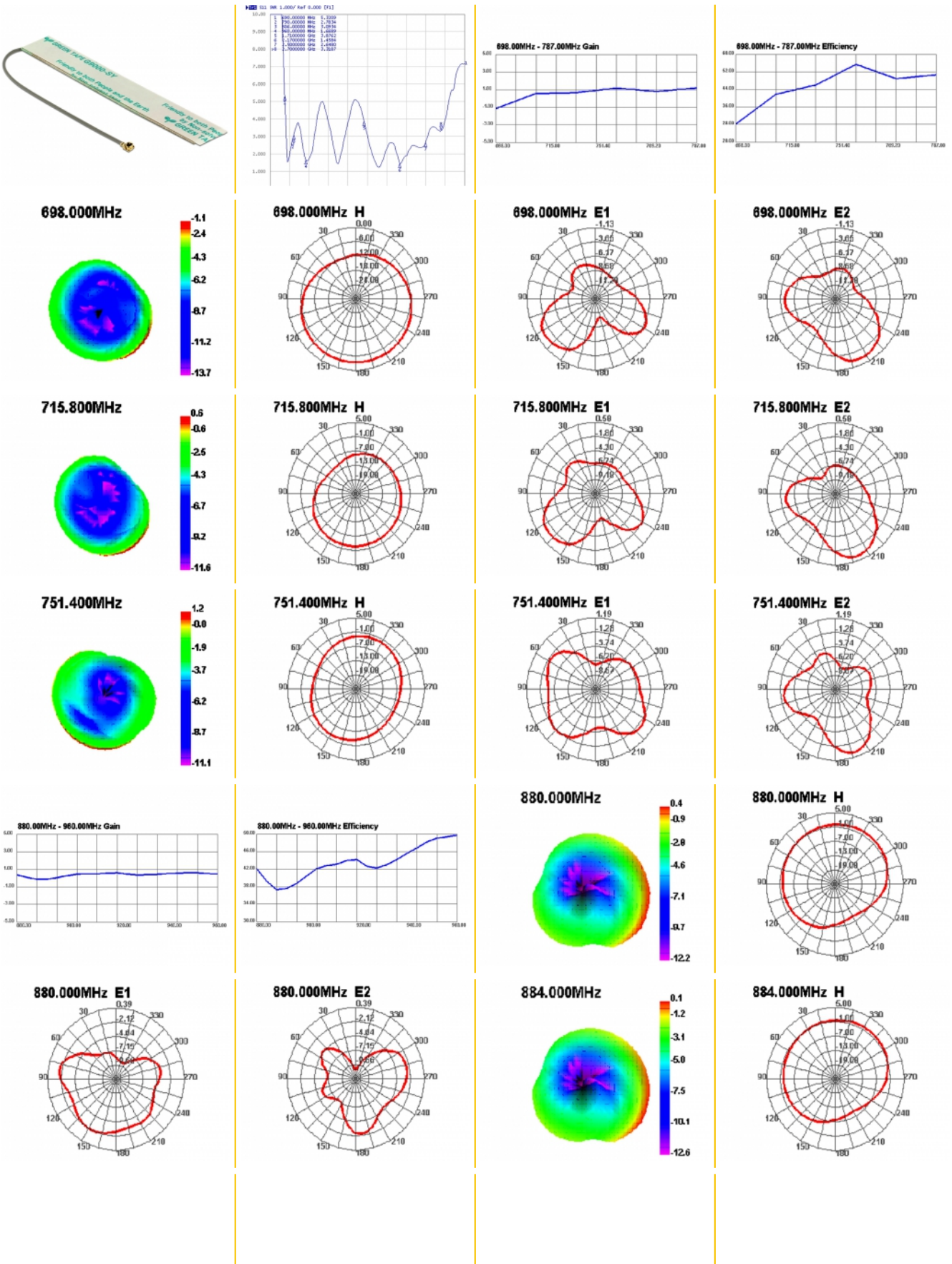
## Preduvjeti sustava

- Uređaj s besplatnim ili I-PEX Inc., MHF® I priključkom
- 

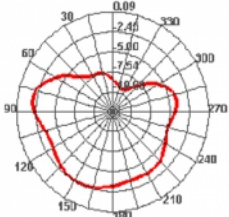
## Sadržaj pakiranja

- Antena

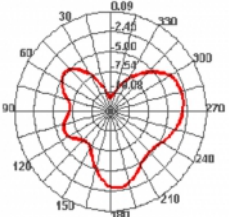
Slike



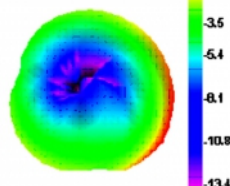
**884.000MHz E1**



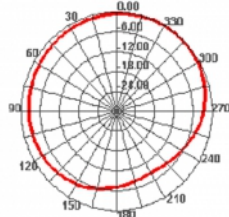
**884.000MHz E2**



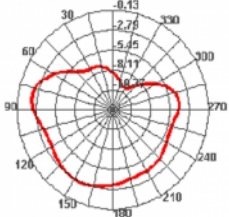
**892.000MHz**



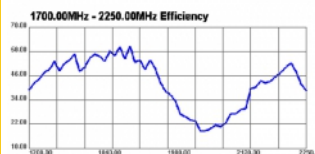
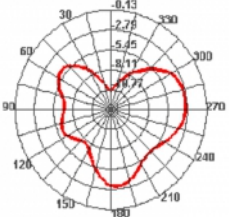
**892.000MHz H**



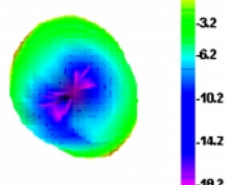
**892.000MHz E1**



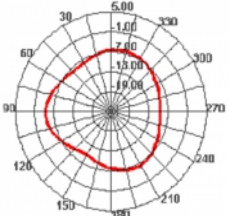
**892.000MHz E2**



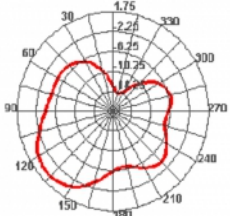
**1700.000MHz**



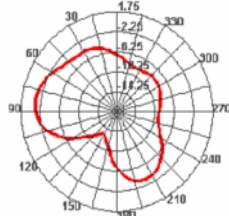
**1700.000MHz H**



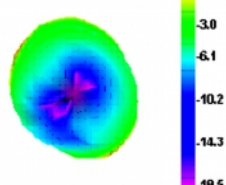
**1700.000MHz E1**



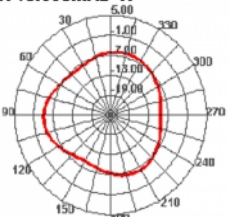
**1700.000MHz E2**



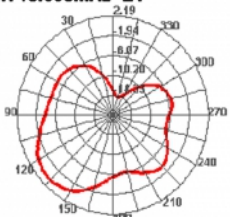
**1710.000MHz**



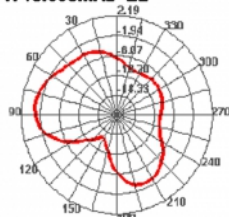
**1710.000MHz H**



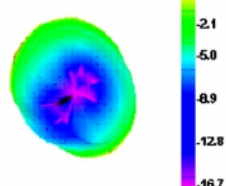
**1710.000MHz E1**



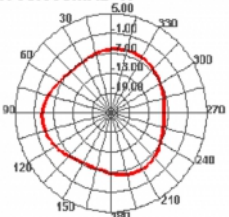
**1710.000MHz E2**



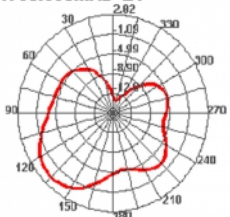
**1730.000MHz**



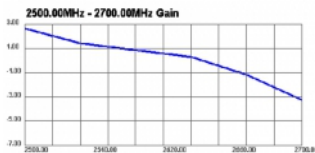
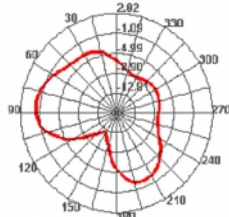
**1730.000MHz H**



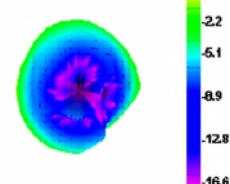
**1730.000MHz E1**



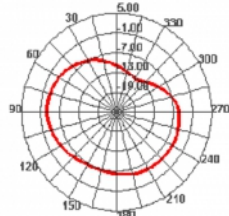
**1730.000MHz E2**



**2500.000MHz**

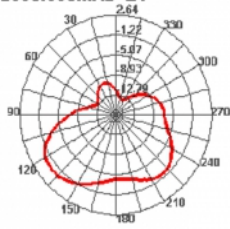


**2500.000MHz H**

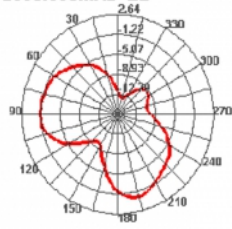




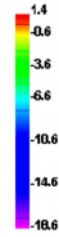
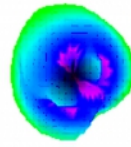
**2500.000MHz E1**



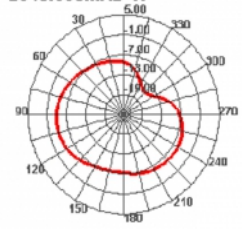
**2500.000MHz E2**



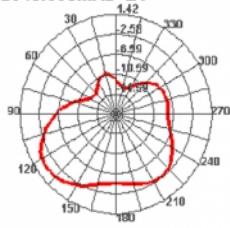
**2540.000MHz**



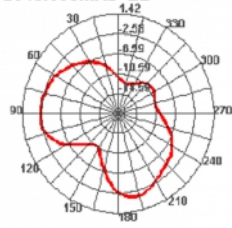
**2540.000MHz H**



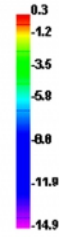
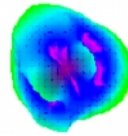
**2540.000MHz E1**



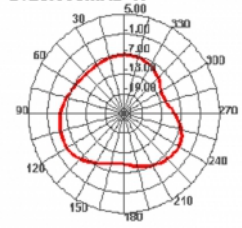
**2540.000MHz E2**



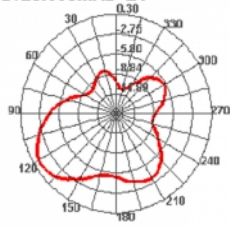
**2620.000MHz**



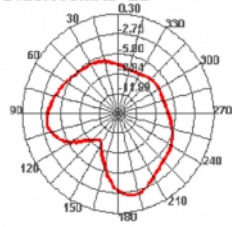
**2620.000MHz H**



**2620.000MHz E1**



**2620.000MHz E2**



## General

Mounting type:	Samoljepljiva
Suitable for indoor:	Yes (Da)

## Interface

priključak:	1 x I-PEX Inc., MHF® I muški
-------------	------------------------------

## Technical characteristics

Frequency range:	1710 - 2700 MHz 690 - 960 MHz
Antenna gain:	2 - 3 dBi
Impedancijaa:	50 Ω
Radna temperatura:	-10 °C ~ 55 °C
VSWR:	1,5

## Physical characteristics

Antenna type:	PCB
Cable category:	koaksijalni
Cable attenuation:	3.2 dB @ 2.4 GHz per meter
Boja kabela:	siv
Cable length incl. connector:	10 cm
Duljina:	96,0 mm
Width:	14,0 mm
Height:	0,9 mm
Najmanji polumjer savijanja:	4,5 mm