

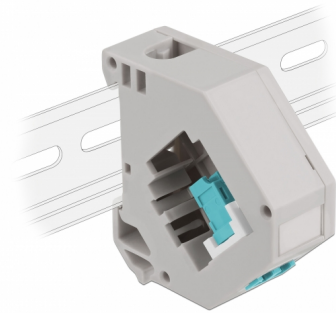
# Delock DIN rail Adapter with Keystone LC Duplex female to LC Duplex female aqua

## Description

This adapter by Delock contains a suitable Keystone module with a LC Duplex coupler that can be used to connect optical fiber cables.

### DIN rail mounting

The adapter can be attached to a 35 mm wide DIN rail. In addition, the adapter also has a small labelling field which can be individually labelled or provided with various symbols.



**Item no. 87194**

EAN: 4043619871940

Country of origin: China

Package: Zip poly bag

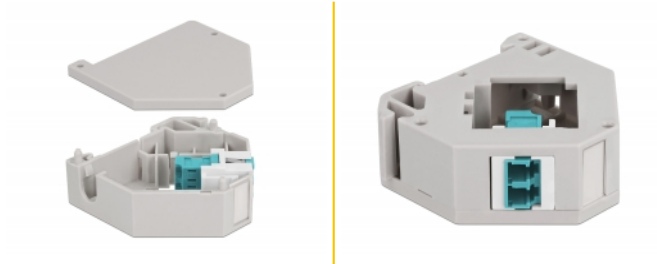
## Technical details

- Connectors:
  - 1 x LC Duplex female >
  - 1 x LC Duplex female
- DIN rail mounting: 35 mm
- Stackable
- With labelling field
- Operating temperature: -40 °C ~ 85 °C
- Material: plastic
- Colour: grey / white / aqua
- Dimensions (LxWxH): ca. 60.1 x 59.4 x 21.6 mm

## Package content

- DIN rail adapter

## Images



## General

Mounting type:	DIN rail mounting: 35 mm
----------------	--------------------------

## Interface

Connector 1:	1 x LC Duplex female
Connector 2:	1 x LC Duplex female

## Technical characteristics

Operating temperature:	-40 °C ~ 85 °C
------------------------	----------------

## Physical characteristics

Material:	Plastic
Length:	60.1 mm
Width:	59.4 mm
Height:	21.6 mm
Colour:	grey / white / aqua