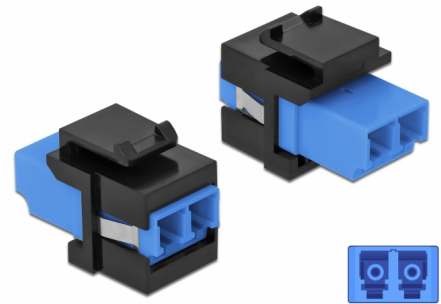


# Delock Keystone Module LC Duplex female to LC Duplex female blue / black

## Description

This module by Delock can be used to extend fiber optic cables. With its standardised dimensions it can be used for easy snap-in mounting in e.g. a Keystone patch panel, face plate or surface-mount box.



**Item no. 86718**

EAN: 4043619867189

Country of origin: China

Package: Zip poly bag

## Technical details

- Connectors:
  - 1 x LC Duplex female >
  - 1 x LC Duplex female
- Colour: blue
- For single-mode fiber
- Insertion loss < 0.2 dB
- Dust covers
- For Keystone ports with 19.2 x 14.9 mm
- Housing colour: black
- Dimensions (LxWxH): ca. 29.2 x 16.5 x 21.9 mm

## System requirements

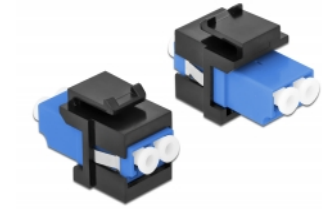
- A free LC Duplex plug

## Package content

- Keystone module

---

## Images



### General

Mounting type:	Keystone module
----------------	-----------------

### Interface

Connector 1:	1 x LC Duplex
Connector 2:	1 x LC Duplex

### Physical characteristics

Housing colour:	black
Length:	29.2 mm
Width:	16.5 mm
Height:	21.9 mm
Colour:	blue