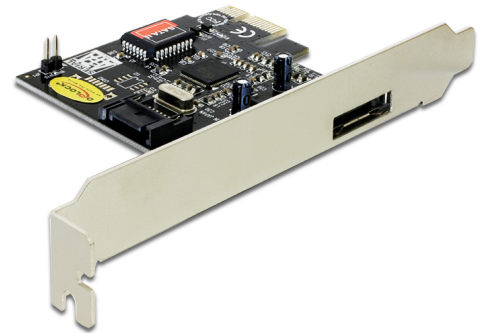


# Delock PCI Express Card > 1 x external eSATA 3 Gb/s + 1 x internal SATA 3 Gb/s

## Description

This Delock PCI Express card expands your PC by one external eSATA port, as well as one internal SATA port. You can connect devices like e.g. external enclosures, hard drives, DVD-drives etc. to the card.



**Item no. 70157**

EAN: 4043619701575

Country of origin: China

Package: Retail Box

## Technical details

- Connector:
  - external:
    - 1 x eSATA 3 Gb/s 7 pin female
  - internal:
    - 1 x SATA 3 Gb/s 7 pin female
  - 1 x PCI Express x1, V1.0a
  - 1 x pin header for PWR LED for indication of hard drive accessing
- Chipset: Silicon Image
- Data transfer rate up to 3 Gb/s
- Supports SATA Port Multiplier
- Supports hard drive with Native Command Queue (NCQ) feature

## System requirements

- Windows 2000/XP/XP-64/Server-2003/Vista/Vista-64,  
Linux Kernel 2.6, Mac OS 8.6
- PC with one free PCI Express slot

---

## Package content

- PCI Express card
- Driver CD
- User manual

---

## Images

