

Delock 19" Keystone Patch Panel with 24 tiltable ports and strain relief

Description

This patch panel by Delock can be mounted in a **19" cabinet**. With its standardized dimensions, it is suitable for easy **snap-in mounting of 24 Keystone modules**.

With tiltable Keystone ports

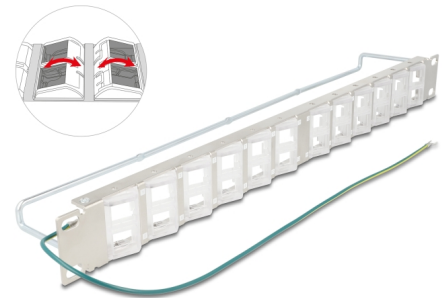
The **tiltable Keystone ports** allow for an angled and space saving installation of cables.

Cable fixing for optimal cable management

On the back of the patch panel, the cables can be fixed with cable ties to enable clear and **orderly cable routing**.

Note

Due to the narrow design only keystone modules up to max. 17.5 mm width can be used.



Item no. 67066

EAN: 4043619670666

Country of origin: China

Package: Box

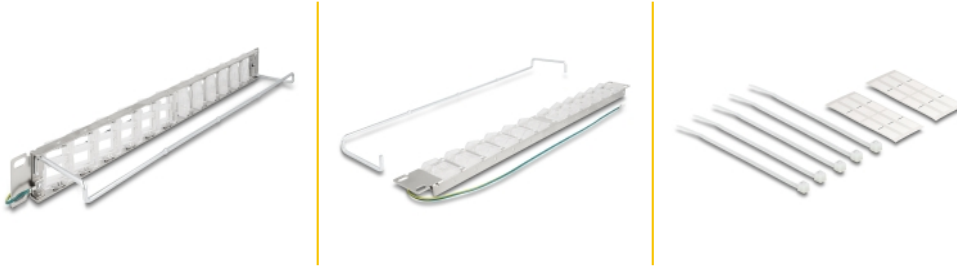
Technical details

- For mounting in 19" network cabinet, 1U
- 24 x Keystone port tiltable 19.2 x 14.9 mm
- Material: metal / plastic
- Colour: black
- Dimensions (LxWxH): ca. 482.6 x 78.4 x 44.2 mm

Package content

- 19" patch panel
- Ground wire
- 2 x inscription label
- 6 x cable tie

Images



General

Mounting type:	19 in
----------------	-------

Physical characteristics

Material:	metal / plastic
Length:	482.6 mm
Width:	78.4 mm
Height:	44.2 mm
Colour:	black