

# Delock RJ45 Modular Plug with front opening (easy connect) Cat.6 and bend protection boots 50 pcs set

## Description

This high quality RJ45 plug set by Delock includes shielded RJ45 plugs with front opening and suitable bend protection boots for optimal assembly installation of cables from 26 - 23 AWG.

### With front opening (easy connect)

The wire pairs can simply be led out at the front of the RJ45 plug for faster installation. In addition, the wiring sequence can be optimally checked. The reduced distance between the wires and the contacts optimises the connection.

### With bend protection boots

The included bend protection boots protects the cable end from abrasion and prevent heavy tensile strain on the cable.



**Item no. 66905**

EAN: 4043619669059

Country of origin: China

Package: Box

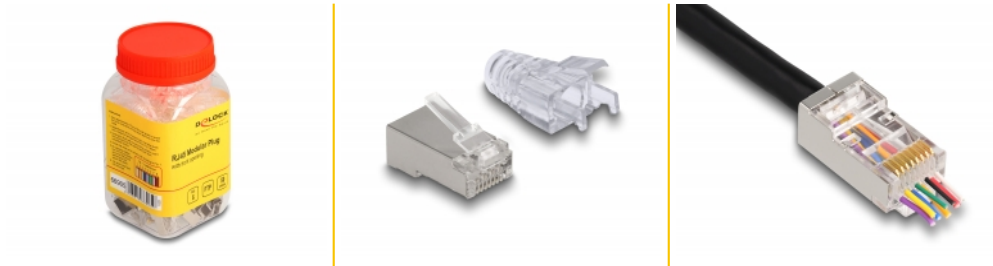
## Technical details

- RJ45 plug with front opening (easy connect)
- Suitable for Cat.6 cables
- For solid or stranded wire (26 - 23 AWG)
- Quick installation of wire pairs
- Easy wiring check
- Shielded (FTP)
- 3-prong contact
- Contacts gold-plated: 1.27 um / 50 u"
- Housing material: PC
- Dimensions (LxWxH): ca. 22.5 x 15.0 x 11.7 mm

## Package content

- 50 x RJ45 plug
- 50 x bend protection boots

## Images



### General

Specification:	Cat. 6
----------------	--------

### Interface

connector:	1 x RJ45 male
------------	---------------

### Physical characteristics

Housing material:	PC
Conductor gauge:	26 - 23 AWG
Shielding:	FTP
Length:	22.5 mm
Width:	15.0 mm
Height:	11.7 mm