

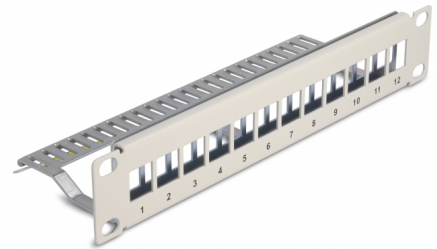
Delock 10" Keystone Patch Panel 12 port with strain relief 1U grey

Description

This patch panel by Delock can be mounted in a 10" cabinet. With its standardized dimensions, it is suitable for easy snap-in mounting of 12 Keystone modules.

Cable fixing for optimal cable management

On the back of the patch panel, the cables can be fixed with cable ties to enable clear and orderly cable routing.



Item no. 66875

EAN: 4043619668755

Country of origin: China

Package: Box

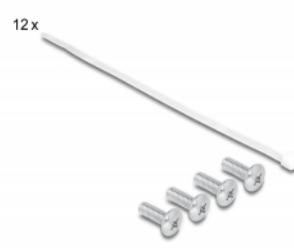
Technical details

- For mounting in 10" network cabinet, 1U
- 12 Keystone ports 16.5 x 14.9 mm
- Material: metal
- Colour: grey
- Dimensions (LxWxH): ca. 254 x 72 x 44 mm

Package content

- 10" patch panel
- 12 x cable tie
- 4 x screw
- Ground wire

Images



General

Mounting type:	10 in
----------------	-------

Physical characteristics

Material:	metal
Length:	254 mm
Width:	72 mm
Height:	44 mm
Colour:	grey