

Delock Thermostat with normally closed contact for DIN rail

Description

This thermostat by Delock can be used to control heating equipment or to switch signal devices when the temperature is exceeded. The contact opens when the temperature rises. Due to the integrated clips on the back, it can be mounted on a 35 mm DIN rail in a control cabinet.



Item no. 66824

EAN: 4043619668243

Country of origin: China

Package: Box

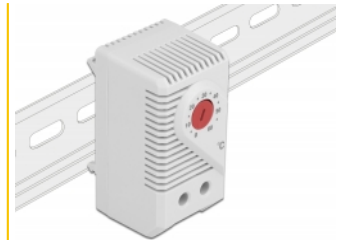
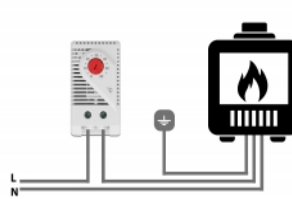
Technical details

- Connector: 2 pin terminal for 2.5 mm²
- Switching function: normally closed contact
- Switching capacity: max. AC 250 V, 10 (2) A / 120 VAC, 15 (2) A DC 30 W
- Switching temperature difference: 7 K (±4 K tolerance)
- Temperature setting range: 0 °C ~ 60 °C
- Sensor: thermobimetal
- DIN rail mounting: 35 mm
- Protection class: IP20
- Lifetime: > 100.000 cycles
- Fire-resistance rating: 94V-0
- Operating temperature: -45 °C ~ 80 °C
- Colour:
 - housing: grey
 - temperature regulator: red
- Housing material: plastic
- Dimensions (LxWxH): ca. 60 x 43 x 33 mm

Package content

- Thermostat
- User manual

Images



General

| | |
|----------------|----------------|
| Mounting type: | DIN rail 35 mm |
|----------------|----------------|

Interface

| | |
|------------|--|
| connector: | 2 pin terminal for 2.5 mm ² |
|------------|--|

Technical characteristics

| | |
|------------------------|----------------|
| Operating temperature: | -45 °C ~ 80 °C |
|------------------------|----------------|

Physical characteristics

| | |
|-------------------|---------|
| Housing colour: | grey |
| Housing material: | Plastic |
| Length: | 60 mm |
| Width: | 43 mm |
| Height: | 33 mm |