

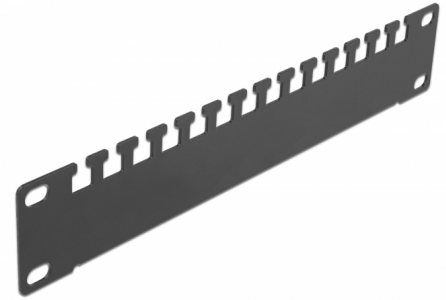
Delock 10" Cable support rail 1U black

Description

This cable support rail by Delock is suitable for installation in a 10" network cabinet.

Optimal cable management

Exposed cables can be fixed to the rail with cable ties or hook-and-loop fasteners for neat and orderly cable management.



Item no. 66677

EAN: 4043619666775

Country of origin: China

Package: Box

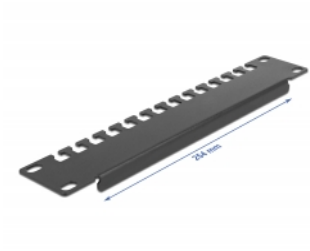
Technical details

- For mounting in 10" network cabinet, 1U
- 14 cable routings
- Colour: black
- Material: metal
- Dimensions (LxWxH): ca. 254.0 x 44.0 x 10.0 mm

Package content

- 10" cable routing panel
- 4 x screws
- 4 x caged nuts
- 4 x washers

Images



General

Mounting type:	10 in
----------------	-------

Physical characteristics

Material:	metal
Length:	254.0 mm
Width:	44.0 mm
Height:	10.0 mm
Colour:	black