

Delock DIN Rail 35 x 7.5 mm (25 cm) Aluminium

Description

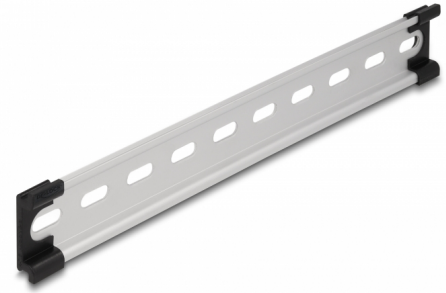
This DIN rail by Delock can be used to mounting different electronic devices and components.

Multifunctional application

The DIN rail can be mounted in a control cabinet and is used as a mounting system, e.g. for power supplies, screw terminals and interface modules.

Simple mounting option

To allow easy installation, the DIN rail is provided with slot holes.



Item no. 66176

EAN: 4043619661763

Country of origin: China

Package: Box

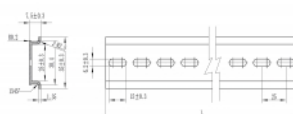
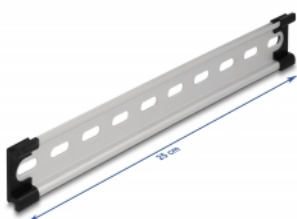
Technical details

- Mounting hole: 15.0 x 6.2 mm
- Material: aluminium
- Dimensions (LxWxH): ca. 250.0 x 35,0 x 7,5 mm

Package content

- 1 x DIN rail
- 2 x end cover

Images



Physical characteristics

Material:	Aluminium
Length:	250 mm
Width:	35 mm
Height:	7.5 mm