

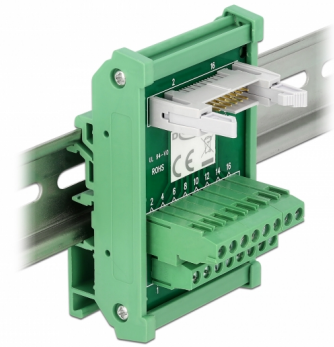
Interface Module for DIN Rail with 16 pin Terminal Block and 16 pin IDC Pin Header male

Description

This interface module by Delock connect the 16 pin terminal block with the 16 pin IDC pin header male and serves as an interface for electrical wiring of electronic devices.

DIN Rail Mounting

This interface module can be mounted on a 15 mm or 35 mm DIN rail.



Item no. 66050

EAN: 4043619660506

Country of origin: China

Package: Retail Box

Technical details

- Connectors:
 - 1 x 16 pin terminal block screw terminal
 - 1 x 16 pin IDC pin header with lock
- Useable for a cable gauge from 26 to 14 AWG
- Operating temperature: -20 °C ~ 105 °C
- DIN rail mounting: 15 mm and 35 mm
- 4 x mounting holes
- Colour: green
- Dimensions (LxWxH): ca. 85.0 x 53.0 x 30.0 mm

Package content

- 1 x interface module

Images



General

Suitable for conductor gauge:	26 - 14 AWG
Mounting type:	DIN rail mounting: 15 mm and 35 mm

Interface

Connector 1:	1 x 16 pin terminal block screw terminal
Connector 2:	1 x 16 pin IDC pin header with lock

Technical characteristics

Operating temperature:	-20 °C ~ 105 °C
------------------------	-----------------

Physical characteristics

Length:	85.0 mm
Width:	53.0 mm
Height:	30.0 mm
Colour:	green