

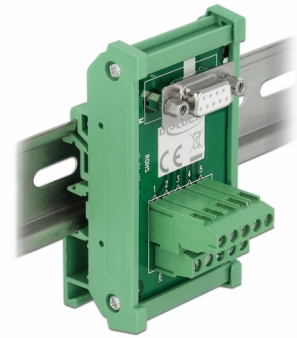
Interface Module for DIN Rail with 10 pin Terminal Block and Serial DB9 female

Description

This interface module by Delock connect the 10 pin terminal block with the serial DB9 female port and serves as an interface for electrical wiring of serial devices.

DIN Rail Mounting

This interface module can be mounted on a 15 mm or 35 mm DIN rail.



Item no. 66038

EAN: 4043619660384

Country of origin: China

Package: Retail Box

Technical details

- Connectors:
 - 1 x 10 pin terminal block screw terminal
 - 1 x serial DB9 female with nuts
- Useable for a cable gauge from 26 to 14 AWG
- Operating temperature: -20 °C ~ 105 °C
- DIN rail mounting: 15 mm and 35 mm
- 4 x mounting holes
- Colour: green
- Dimensions (LxWxH): ca. 85.0 x 46.0 x 30.0 mm

Package content

- 1 x interface module

Images



General

Suitable for conductor gauge:	26 - 14 AWG
Mounting type:	DIN rail mounting: 15 mm and 35 mm

Interface

Connector 1:	1 x 10 pin terminal block screw terminal
Connector 2:	1 x serial DB9 female with nuts

Technical characteristics

Operating temperature:	-20 °C ~ 105 °C
------------------------	-----------------

Physical characteristics

Length:	85.0 mm
Width:	46.0 mm
Height:	30.0 mm
Colour:	green