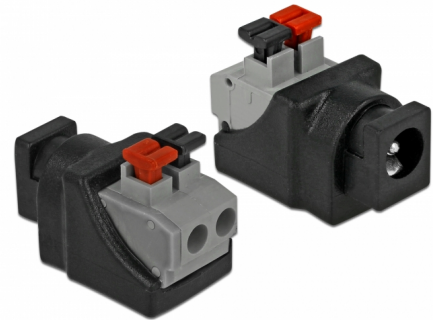


Delock Adapter DC 5.5 x 2.1 mm female > Terminal Block with push button 2 pin

Description

This terminal block adapter by Delock can be used to connect bare wires. Thus the adapter is not only convenient for special industry applications, but also for the hobby area, e.g. railway modelling. Various devices with a suitable DC power connector can be connected to the adapter and are supplied with power individually (depending on the requirements of the device).



Item no. 65524

EAN: 4043619655243

Country of origin: China

Package: Zip poly bag

Technical details

- Connectors:
 - 1 x DC 5.5 x 2.1 mm female
 - 1 x 2 pin terminal block
- Terminal block screwless
- Current: max. 9 A
- DC pin length: ca. 11 mm
- Pitch: 5.00 mm
- Dimensions (LxWxH): ca. 27 x 18 x 15 mm

System requirements

- One free DC 5.5 x 2.1 mm female port

Package content

- Adapter

