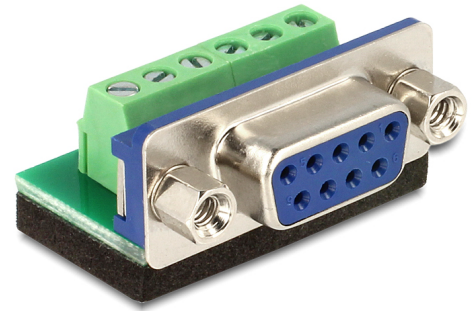


# Delock Terminal block > D-Sub 9 pin female

## Description

This Serial to Terminal Block adapter is made for special industrial application e.g. for connecting single wires with open cable heads.



**Item no. 65498**

EAN: 4043619654987

Country of origin: China

Package: Zip poly bag

## Technical details

- Connector:  
Serial D-Sub 9 pin female  
6 pin Terminal Block
- Bottom side with isolating, antislip pad
- Pitch 3.81
- Dimension (LxWxH): ca. 32 x 22.5 x 11 mm

## System requirements

- One free D-Sub 9 pin male port

## Package content

- Adapter

## Images

