

# Delock USB 5 Gbps Docking and Clone Station for 5 x 2.5" SATA HDD / SSD

## Description

This HDD / SSD docking station by Delock enables an external connection of up to **five 2.5" SATA HDDs / SSDs** through the USB interface, as well as the simple exchange of the drives by Hot Swap. This solution does not require an external enclosure since the HDD / SSD will be plugged into the docking station directly.

### Five ports for 2.5" HDD / SSD

Up to five HDDs or SSDs can be inserted and accessed simultaneously.

### Clone function 1 to 4

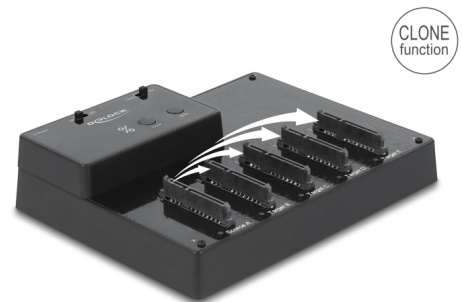
The clone function enables to copy the content of one HDD / SSD to one or more (up to four) others **without using a PC**.

### USB connection and separate power supply

Due to the USB port and the included USB cable, the docking station can easily be connected to the computer. In addition, the power supply included in the delivery content **ensures a power supply** for the used storage devices.

### Accessory

By the help of the optional accessory it is also possible to connect mSATA, M.2 (key B - SATA) or CFast memories to the Delock docking and clone station.



CLONE  
function

**Item no. 64098**

EAN: 4043619640980

Country of origin: China

Package: Retail Box

## Technical details

- Connectors:
  - 5 x SATA 6 Gb/s 22 pin receptacle
  - 1 x USB 5 Gbps Type-B female
  - 1 x DC jack
- Chipset: JMicron JMS578, JMB391
- Function key:
  - 1 x Clone button

- 1 x Mute button
  - 1 x On / Off switch
  - 1 x switch for mode
  - Suitable for 2.5" SATA HDD / SSD
  - Suitable for all SATA HDDs / SSDs up to SATA 6 Gb/s
  - Data transfer rate up to 5 Gbps
  - 6 x LED indicator
  - LED indicator for power, access and copy status
  - Bootable
  - Dimensions (LxWxH): ca. 169 x 125 x 37 mm
  - Hot Swap, Plug & Play
- 

## Power supply specification

- Input: AC 100 ~ 240 V / 50 ~ 60 Hz / 1.0 A
  - Output: 12 V / 4 A
  - Ground outside, plus inside
  - Dimensions:
    - inside:  $\varnothing$  ca. 2.1 mm
    - outside:  $\varnothing$  ca. 5.5 mm
    - length: ca. 10 mm
- 

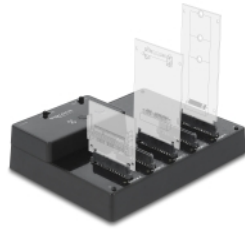
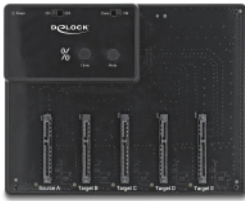
## System requirements

- Linux Kernel 3.3 or above
  - Mac OS 10.14.6 or above
  - Windows 7/7-64/8.1/8.1-64/10/10-64
  - PC or laptop with a free USB Type-A port
- 

## Package content

- Docking station
- 1 x cable USB 5 Gbps A male to USB 5 Gbps B male, length ca. 75 cm
- External power supply
- User manual

## Images



## General

Function:	bootable
Supported operating system:	Linux Kernel 3.3 or above Mac OS 10.14.6 or above Windows 10 32-Bit Windows 10 64-Bit Windows 7 32-Bit Windows 7 64-Bit Windows 8.1 32-Bit Windows 8.1 64-Bit

## Interface

Connector 1:	1 x USB 5 Gbps Type-B female
Connector 2:	5 x SATA 6 Gb/s 22 pin receptacle
connector 3:	1 x DC jack

## Physical characteristics

Length:	169 mm
Width:	125 mm
Height:	37 mm
Colour:	black