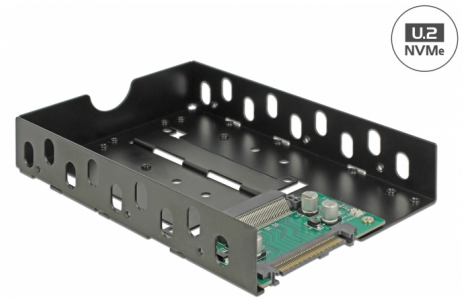


# Delock Converter U.2 SFF-8639 to U.2 SFF-8639 with 3.5" frame

## Description

This converter by Delock enables the connection of a U.2 SSD. The converter can be installed into a 3.5" slot and can be connected to the system internally through the U.2 68 pin interface.



**Item no. 63956**

EAN: 4043619639564

Country of origin: Taiwan,  
Republic of China

Package: Box

## Technical details

- Connectors:
  - 1 x U.2 SFF-8639 male >
  - 1 x U.2 SFF-8639 female
- Interface: PCIe
- LEDs for power and activity
- Supports NVM Express (NVMe)
- Power protected circuit 12 V for Hot Plug
- Power protected circuit 3.3 V (AUX) for Hot Plug
- Bootable
- Dimensions (LxWxH): ca. 147 x 101 x 26 mm

## System requirements

- Linux Kernel 3.10 or above
- Windows 7/7-64/8.1/8.1-64/10/10-64
- Connection cables
- A free 3.5" bay

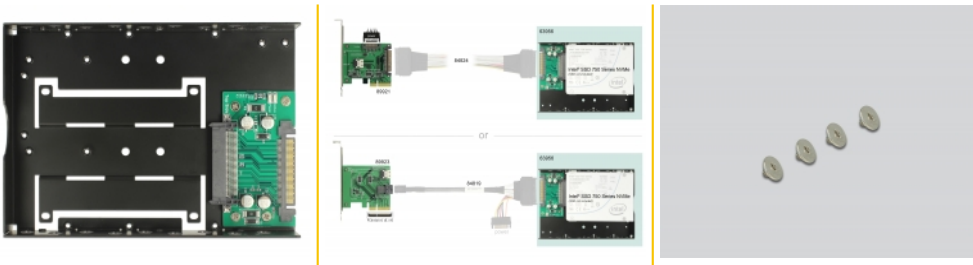
---

## Package content

- Converter
- 3.5" enclosure
- 4 x screw
- User manual

---

## Images



### General

Form factor:	3.5"
Function:	NVM Express (NVMe) bootable
Protection:	Power protected circuit 12 V for Hot Plug Power protected circuit 3.3 V (AUX) for Hot Plug

### Interface

Connector 1:	1 x 68 pin U.2 SFF-8639 male
Connector 2:	1 x U.2 SFF-8639 female

### Physical characteristics

Housing material:	metal
-------------------	-------