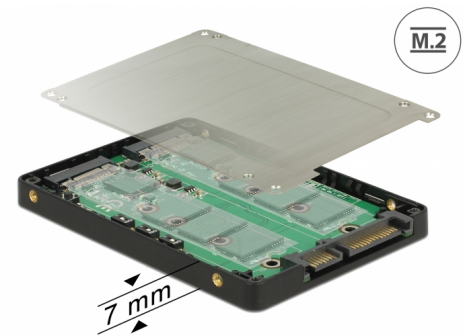


Delock 2.5" Converter SATA 22 pin > 2 x M.2 with RAID with Enclosure

Description

This Delock converter enables the connection of up to two M.2 SSD in 2280, 2260, 2242 or 2230 format which can be used as a 2.5" HDD. The converter can be installed into your system internally through a SATA 22 pin interface. When using more than one SSD, you have the possibility to use different RAID level.



Note

This product provides a chipset-based RAID function. Management and setting of the RAID mode is not possible via the operating system or BIOS. Different diagnostic software is not compatible with this solution.

The SMART function is not supported. JBOD is only supported on SATA controllers with port multiplier function.

Item no. 62791

EAN: 4043619627912

Country of origin: Taiwan, Republic of China

Package: Retail Box

Technical details

- Connectors:
 - 1 x SATA 6 Gb/s 22 pin plug >
 - 2 x 67 pin M.2 key B slot
- Interface: SATA
- Chipset: Asmedia ASM1092R
- Form factor: 2.5"
- Supports M.2 modules in format 2280, 2260, 2242 and 2230 with key B or key B+M based on SATA
- Maximum height of the components on the module: 1.25 mm, application of double-sided assembled modules supported
- Data transfer rate up to 6 Gb/s
- Supports RAID 0, 1, JBOD
- RAID mode set by DIP switch on board
- Maximum output current for each M.2 module: max. 3 A
- 1 x Reset button
- 2 x LED indicator
- Bootable

- Operating temperature: 0 °C ~ 70 °C
- Storage temperature: -40 °C ~ 85 °C
- Dimensions (LxWxH): ca. 100 x 70 x 8 mm

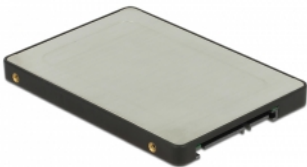
System requirements

- Linux Kernel 3.16 or above
- Windows 7/7-64/8.1/8.1-64/10/10-64
- A free SATA 22 pin interface

Package content

- Converter
- Mounting material
- Screwdriver
- User manual

Images



General

| | |
|---|--|
| Form factor: | 2.5" |
| Function: | bootable |
| Supported operating system: | Linux Kernel 3.16 or above Windows 10 32-Bit Windows 10 64-Bit Windows 7 32-Bit Windows 7 64-Bit Windows 8.1 32-Bit Windows 8.1 64-Bit |
| Slot: | SATA |
| Supported module: | M.2 modules in format 2280, 2260, 2242 and 2230 with key B or key B+M based on SATA |
| Maximum height of the components on the module: | 1.25 mm application of double-sided assembled modules supported |

Interface

| | |
|--------------|-----------------------------|
| Connector 1: | 1 x SATA 6 Gb/s 22 pin plug |
| Connector 2: | 2 x 67 pin M.2 key B slot |

Technical characteristics

| | |
|---------------------|------------------|
| Chipset: | Asmedia ASM1092R |
| Data transfer rate: | 6 Gb/s |
| RAID function: | JBOD 0 1 |

Physical characteristics

| | |
|---------|--------|
| Length: | 100 mm |
| Width: | 70 mm |
| Height: | 8 mm |

Colour:

black
silver

