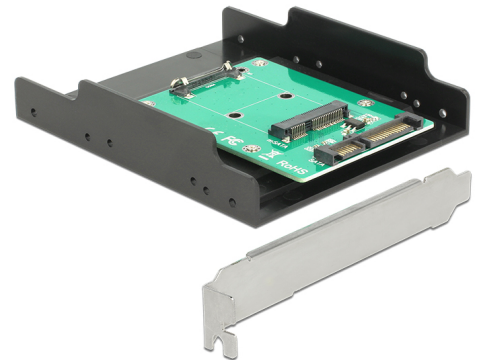


# Delock Converter SATA 22 pin > mSATA with Slot Bracket + 3.5" Frame

## Description

This Delock converter enables the connection of an mSATA SSD in half size or full size format. The converter can be connected to an internal SATA port and can be installed into a free slot of the PC or via the attached 3.5" frame.



**Item no. 62743**

EAN: 4043619627431

Country of origin: China

Package: Retail Box

## Technical details

- Connector:
  - 1 x SATA 6 Gb/s 22 pin plug >
  - 1 x mSATA slot (half size / full size)
- For 3.3 V mSATA memory
- Data transfer rate up to 6 Gb/s
- Bootable
- OS independent, no driver installation necessary

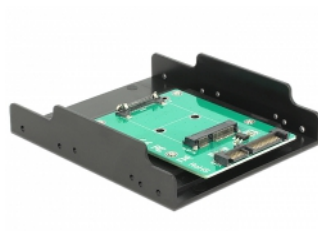
## System requirements

- PC with a free 3.5" bay or PC with one free slot
- One free SATA 7 pin interface and one SATA data cable
- Power supply with a free SATA power connector

## Package content

- Converter
- Slot bracket
- 3.5" frame
- Screws
- User manual

## Images



## General

Function:	bootable
Supported operating system:	OS independent, no driver installation necessary

## Interface

Connector 1:	1 x SATA 6 Gb/s 22 pin receptacle
Connector 2:	1 x mSATA slot

## Technical characteristics

Data transfer rate:	SATA up to 6 Gb/s
---------------------	-------------------