

Delock Keystone Desktop Patch Panel 8 Port grey

Description

This patch panel by Delock can be used as a junction box on the wall or in enclosures. Additionally, clips for DIN rail mounting are included. With its standardized dimensions, it is suitable for easy snap-in mounting of eight Keystone modules.



Note

Due to the narrow design only keystone modules up to max. 17.2 mm width can be used.

Item no. 43336

EAN: 4043619433360

Country of origin: China

Package: White Box

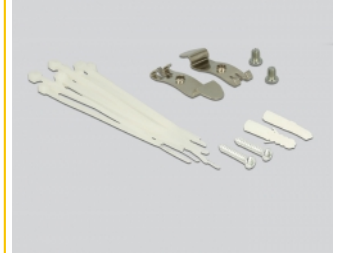
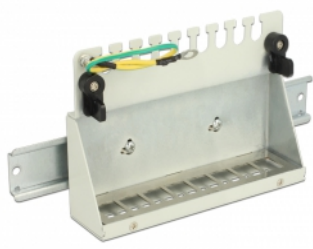
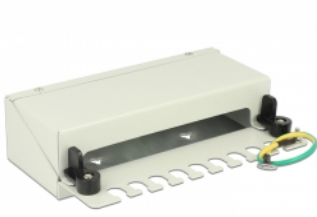
Technical details

- 8 Keystone ports 19.2 x 14.9 mm
- Cable routing 180°
- Shielded
- Metal housing
- Colour: light grey RAL 7035
- Dimensions (WxHxD): ca. 162 x 44.5 x 112.8 mm

Package content

- Keystone Patch Panel
- 2 x DIN-rail clips
- 2 x screws M5
- 12 x cable ties
- 2 x screws
- 2 x dowel

Images



General

Mounting type:	wall DIN rail
----------------	------------------

Physical characteristics

Housing colour:	light grey
Housing material:	metal
Depth:	112.8 mm
Width:	163 mm
Height:	44.5 mm