

Delock WLAN 802.11 a/ax/a/b/g/n Antenă RP-SMA tată 5 dBi 20 cm omnidirecțional cu articulație înclinabilă flexibilă și suprafață de cauciuc, negru

Descriere scurta

Această antenă WLAN de la Delock poate fi conectată la un dispozitiv WLAN cu interfață RP-SMA, pentru a trimite și a primi semnale.

Bluetooth

**Nr. 12636**

EAN: 4043619126361

Țara de origine: China

Pachet: Retail Box

Detalii tehnice

- Conector: 1 x RP-SMA tată
- Interval frecvență:
2,400 - 2,500 GHz
5,150 - 5,850 GHz
- Amplificare antenă: 5 dBi
- Impedanță: 50 Ohm
- Polarizare: liniară, verticală
- VSWR: 2,5
- Temperatură în stare de funcționare: -10 °C ~ 70 °C
- Culoare: negru
- Lungime:
cca 200 mm (cu racord de înclinare)
cca 177 mm (fără racord de înclinare)
- Diametru:
cca 12,70 mm (RP-SMA)

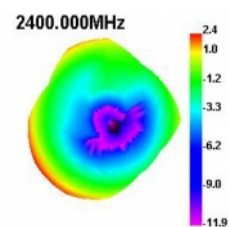
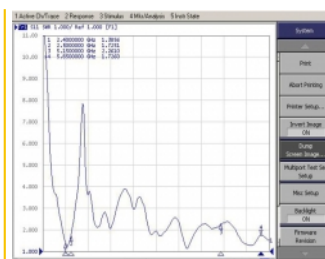
Cerinte de sistem

- Dispozitiv cu un port mamă RP-SMA liber

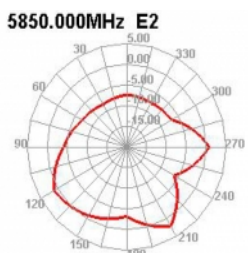
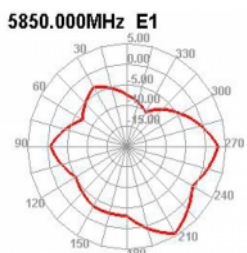
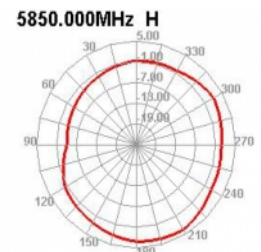
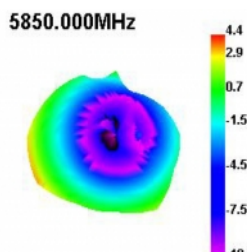
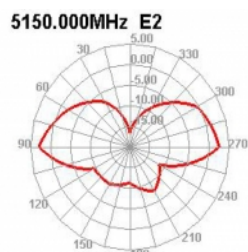
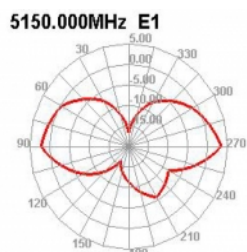
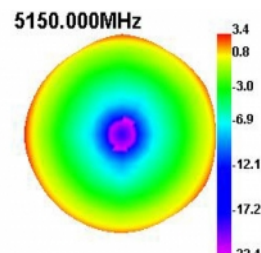
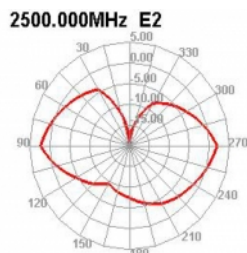
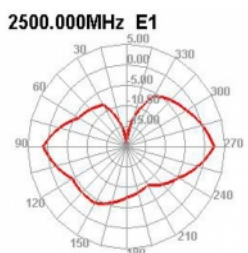
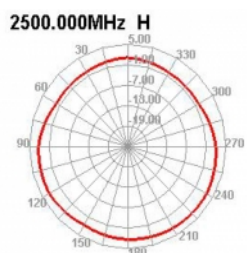
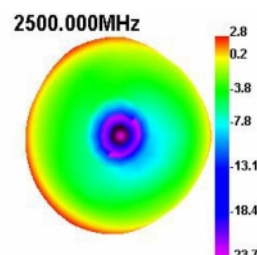
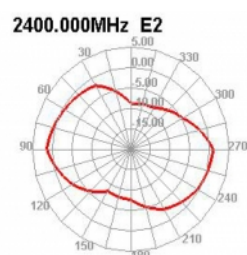
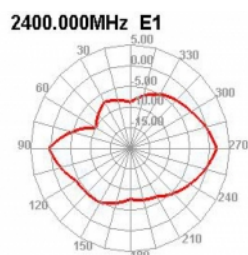
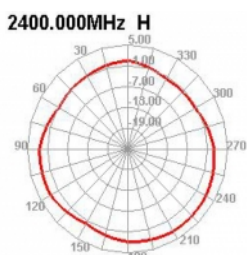
Pachetul contine

- Antenă WLAN

Imagini



2400.000MHz E1



General

Mounting type:	Screw mounting
Suitable for indoor:	Da

Interface

connector:	1 x RP-SMA tată
------------	-----------------

Technical characteristics

Frequency range:	5150 MHz - 5850 MHz 2400 MHz - 2500 MHz
Antenna gain:	5 dBi
Impedance:	50 Ω
Temperatură în stare de funcționare:	-10 °C ~ 70 °C
Polarisation:	linear vertical
VSWR:	2,5

Physical characteristics

Antenna type:	omnidirecțională
Material carcasă:	ABS
Lungime:	20 cm
Diameter connector:	12,7 mm
Colour:	negru