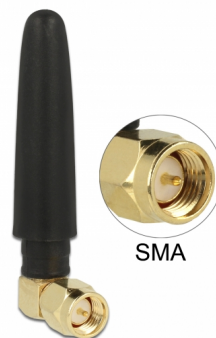


# Delock Antena WLAN 802.11 b/g/n SMA tată 90° 2 dBi omnidirecțional cu articulație înclinată și material flexibil negru

## Descriere scurta

Această antenă de la Delock permite utilizarea în interior a benzii de 2,4 GHz. Este complet compatibilă cu Bluetooth, WLAN 2,4 GHz, ZigBee 2,4 GHz, ISM 2,4 GHz.



**Nr. 12624**

EAN: 4043619126248

Țara de origine: China

Pachet: Pungă din plastic  
cu închidere tip fermoar

## Detalii tehnice

- Conector: 1 x SMA tată 90°
- Bluetooth, WLAN 2,4 GHz, ZigBee 2,4 GHz, ISM
- Interval frecvență: 2,4 - 2,5 GHz
- Amplificare antenă: 2 dBi
- Impedanță: 50 Ohm
- VSWR: 2,5
- Polarizare: liniară, verticală
- Temperatură în stare de funcționare: -40 °C ~ 85 °C
- Material carcasă: cauciuc
- Culoare: negru
- Lungime antenă: ca. 5 cm

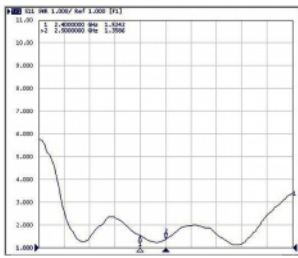
## Cerinte de sistem

- Dispozitiv cu un port mamă SMA liber

## Pachetul contine

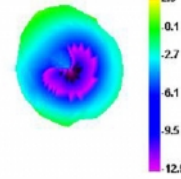
- Antenă

## Imagini

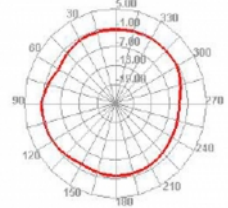


Freq (MHz)	Effi (%)	Effi (dB)	Gain (dBi)	Gain (dBd)
2400	70,99	-1,49	4,17	2,02
2410	69,47	-1,58	3,91	1,76
2420	69,27	-1,59	3,83	1,68
2430	69,19	-1,60	3,67	1,52
2440	68,08	-1,67	3,54	1,39
2450	69,57	-1,58	3,58	1,43
2460	70,66	-1,51	3,56	1,41
2470	71,76	-1,44	3,57	1,42
2480	72,30	-1,41	3,50	1,35
2490	73,39	-1,34	3,56	1,41
2500	73,47	-1,34	3,60	1,45

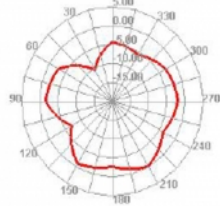
2400.000MHz



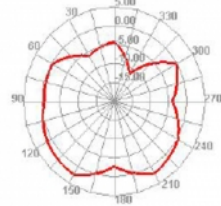
2400.000MHz H



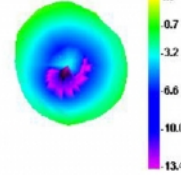
2400.000MHz E1



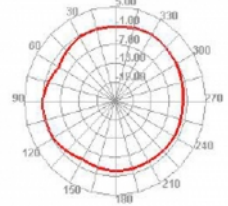
2400.000MHz E2



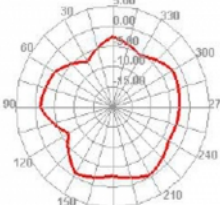
2450.000MHz



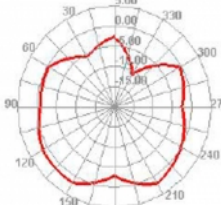
2450.000MHz H



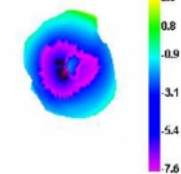
2450.000MHz E1



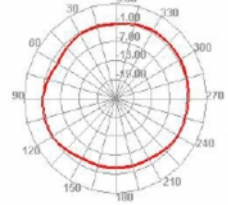
2450.000MHz E2



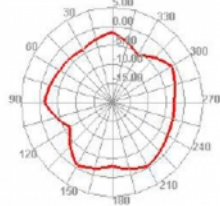
2500.000MHz



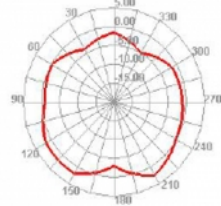
2500.000MHz H



2500.000MHz E1



2500.000MHz E2



## General

Suitable for indoor:	Da
----------------------	----

## Technical characteristics

Frequency range:	2.4 - 2.5 GHz
Antenna gain:	2 dBi
Impedance:	50 Ω
Temperatură în stare de funcționare:	-40 °C ~ 85 °C
Polarisation:	vertical
VSWR:	2,5

## Physical characteristics

Antenna type:	dipol antenna omnidirecțională
Carcasa uloare:	negru
Material carcasă:	rubber
Lungime:	50 mm