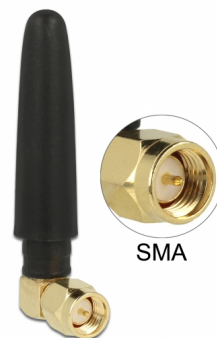


# Delock WLAN 802.11 b/g/n antena SMA muška 90° 2 dBi u svim smjerovima s nagnutim spojem i savitljivim materijalom, crni

## Opis

Ova antena tvrtke Delock omogućava primjenu pojasa od 2,4 GHz u zatvorenom. U potpunosti je usklađena za Bluetooth, WLAN 2,4 GHz, ZigBee 2,4 GHz, ISM 2,4 GHz.



### Predmet br. 12624

EAN: 4043619126248

Zemlja podrijetla: China

Pakiranje: Plastična vrećica sa zip zatvaračem

## Tehnički podaci

- Priključak: 1 x SMA muški 90°
- Bluetooth, WLAN 2,4 GHz, ZigBee 2,4 GHz, ISM
- Frekvencijski opseg: 2,4 - 2,5 GHz
- Pojačanje antene: 2 dBi
- Impedancija: 50 ohma
- VSWR: 2,5
- Polarizacija: linearna, vertikalna
- Radna temperatura: -40 °C ~ 85 °C
- Materijal kućišta: guma
- Boja: crno
- Duljina antene: oko 5 cm

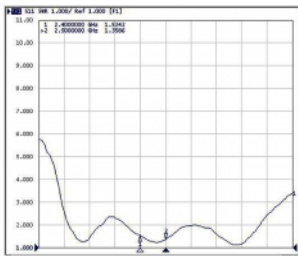
## Preduvjeti sustava

- Uređaj sa slobodnim SMA utičnicom

## Sadržaj pakiranja

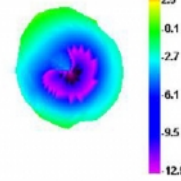
- Antena

## Slike

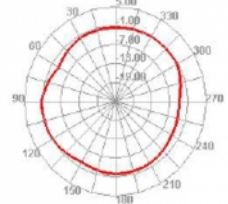


Freq (MHz)	Effi (%)	Effi (dB)	Gain (dBi)	Gain (dBd)
2400	70,99	-1,49	4,17	2,02
2410	69,47	-1,58	3,91	1,76
2420	69,27	-1,59	3,83	1,68
2430	69,19	-1,60	3,67	1,52
2440	68,08	-1,67	3,54	1,39
2450	69,57	-1,58	3,58	1,43
2460	70,66	-1,51	3,56	1,41
2470	71,76	-1,44	3,57	1,42
2480	72,30	-1,41	3,50	1,35
2490	73,39	-1,34	3,56	1,41
2500	73,47	-1,34	3,60	1,45

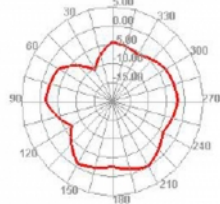
2400.000MHz



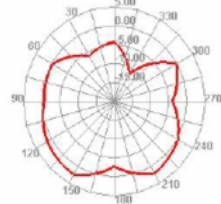
2400.000MHz H



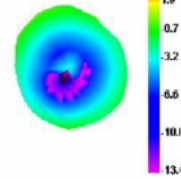
2400.000MHz E1



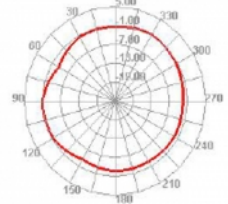
2400.000MHz E2



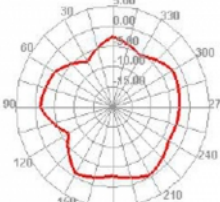
2450.000MHz



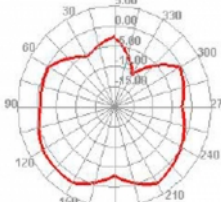
2450.000MHz H



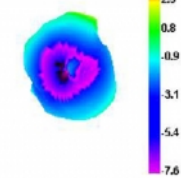
2450.000MHz E1



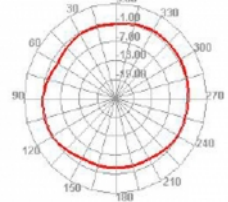
2450.000MHz E2



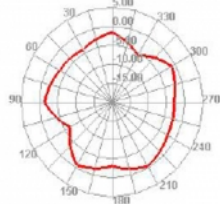
2500.000MHz



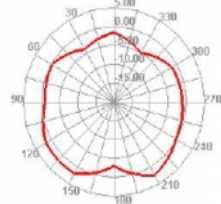
2500.000MHz H



2500.000MHz E1



2500.000MHz E2



## General

Suitable for indoor:	Yes (Da)
----------------------	----------

## Technical characteristics

Frequency range:	2,4 - 2,5 GHz
Antenna gain:	2 dBi
Impedancijaa:	50 $\Omega$
Radna temperatura:	-40 °C ~ 85 °C
Polarisation:	vertikal
VSWR:	2,5

## Physical characteristics

Antenna type:	dipol antenna svesmjerno
Kućište boja:	crne
Materijal kućišta:	rubber
Duljina:	50 mm