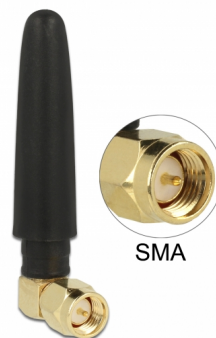


Delock WLAN 802.11 b/g/n Antena SMA macho 90° 2 dBi omnidireccional con articulación basculante y material flexible negro

Descripción

Esta antena de Delock permite el uso de la banda de 2,4 GHz en interiores. Es completamente compatible con Bluetooth, WLAN 2,4 GHz, ZigBee 2,4 GHz, ISM 2,4 GHz.



Número de elemento 12624

EAN: 4043619126248

Pais de origen: China

Paquete: Bolsa de plástico con cremallera

Detalles técnicos

- Conector: 1 x SMA macho 90°
- Bluetooth, WLAN 2,4 GHz, ZigBee 2,4 GHz, ISM
- Intervalo de frecuencias: 2,4 - 2,5 GHz
- Ganancia de la antena: 2 dBi
- Impedancia: 50 ohmios
- VSWR: 2,5
- Polarización: Lineal y vertical
- Temperatura de funcionamiento: -40 °C ~ 85 °C
- Material de la carcasa: caucho
- Color: negro
- La longitud de la antena: 5 cm aproximadamente

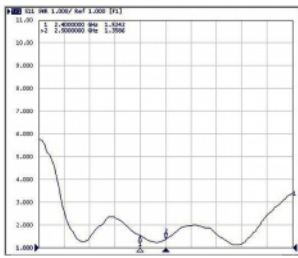
Requisitos del sistema

- Dispositivo con un conector SMA disponible

Contenido del paquete

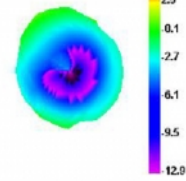
- Antena

Image

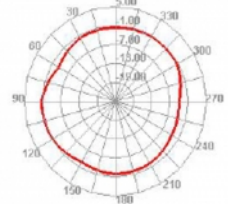


Freq (MHz)	Effi (%)	Effi (dB)	Gain (dBi)	Gain (dBd)
2400	70,99	-1,49	4,17	2,02
2410	69,47	-1,58	3,91	1,76
2420	69,27	-1,59	3,83	1,68
2430	69,19	-1,60	3,67	1,52
2440	68,08	-1,67	3,54	1,39
2450	69,57	-1,58	3,58	1,43
2460	70,66	-1,51	3,56	1,41
2470	71,76	-1,44	3,57	1,42
2480	72,30	-1,41	3,50	1,35
2490	73,39	-1,34	3,56	1,41
2500	73,47	-1,34	3,60	1,45

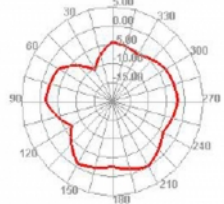
2400.000MHz



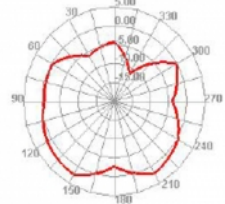
2400.000MHz H



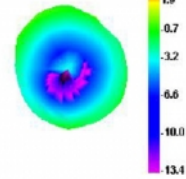
2400.000MHz E1



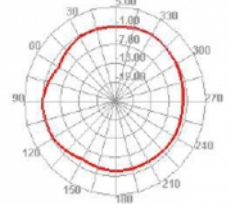
2400.000MHz E2



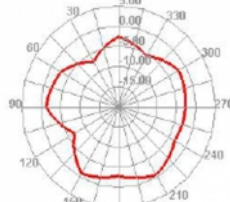
2450.000MHz



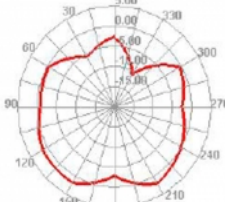
2450.000MHz H



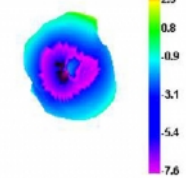
2450.000MHz E1



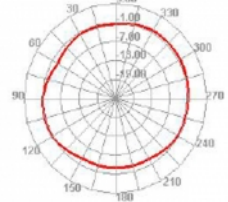
2450.000MHz E2



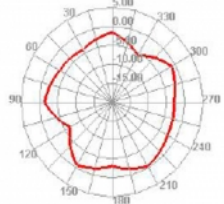
2500.000MHz



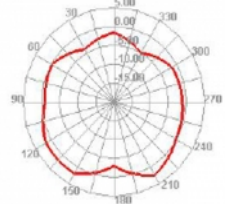
2500.000MHz H



2500.000MHz E1



2500.000MHz E2



General

Suitable for indoor:	Si
----------------------	----

Technical characteristics

Frequency range:	2,4 - 2,5 GHz
Antenna gain:	2 dBi
Impedanciaios:	50 Ω
Temperatura de funcionamiento:	-40 °C ~ 85 °C
Polarisation:	vertikal
VSWR:	2,5

Physical characteristics

Antenna type:	dipol antenna omnidireccional
Carcasa color:	negro
Material de la carcasa:	rubber
Longitud:	50 mm