

Delock LTE UMTS GSM antena N ženska 7 - 10 dBi jednosmjerna montaža na zid i držač na otvorenom

Opis

Ova Delock antena omogućuje vam uporabu različitih LTE, GSM i UMTS opsega na otvorenim i u zatvorenim prostorima. U potpunosti je usklađena za Bluetooth, WLAN 2,4 GHz, ZigBee, DECT, Z-Wave i LoRa 868 MHz / 915 MHz.



Predmet br. 12435

EAN: 4043619124350

Zemlja podrijetla: China

Pakiranje: White Box

Tehnički podaci

- Priključak: 1 x N ženski
- Frekvencijski opseg:
 - 698 - 960 MHz
 - 1710 - 2700 MHz
- ZigBee, Bluetooth, WLAN 2,4 GHz, DECT, Z-Wave, LoRa 868 MHz / 915 MHz
- Pojačanje antene: 7 - 10 dBi
- Impedancija: 50 ohma
- VSWR: 1,8
- Polarizacija: vertikalna
- Horizontalni kut snopa: 70°
- Vertikalnog kut snopa: 55°
- Snaga na predaji: maks. 100 W
- Materijal kućišta: ABS
- Stupanj zaštite: IP65
- Boja: bijela
- Radna temperatura: -40 °C ~ 70 °C
- Mjere (DxŠxV): oko 210 x 180 x 45 mm

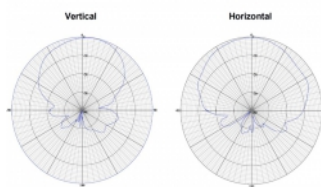
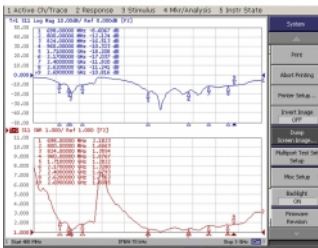
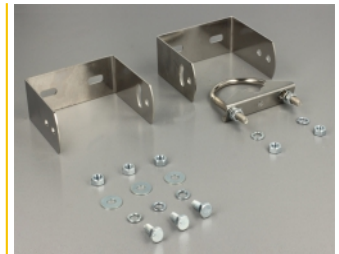
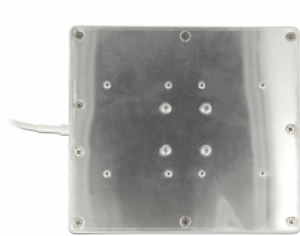
Preduvjeti sustava

- Kabel s N muškim

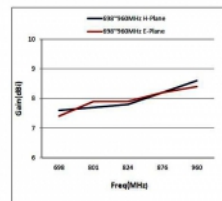
Sadržaj pakiranja

- LTE antenna

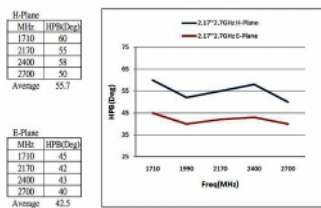
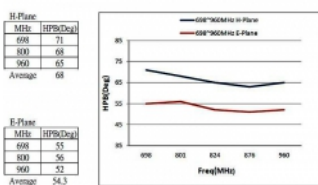
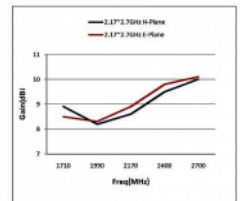
Slike



H-Plane	
MHz	dBi
698	5
900	6.8
960	7.1
Average: 6.3	



H-Plane	
MHz	dBi
1710	8.9
2170	8.8
2400	9.5
2700	10
Average: 9.25	



E-Plane	
MHz	HP(dB)
698	55
900	56
960	52
Average: 54.3	

E-Plane	
MHz	HP(dB)
1710	45
2170	43
2400	43
2700	40
Average: 42.5	

Interface

priključak:	1 x N ženski
-------------	--------------

Technical characteristics

Frequency range:	1710 - 2700 MHz 698 MHz - 960 MHz
Gain:	7 - 10 dBi
Beam width horizontal:	70°
Beam width vertical:	55°
Impedancijaa:	50 Ω
Radna temperatura:	-40 °C ~ 70 °C
Polarisation:	vertikal
Power handling:	100W
VSWR:	1,8

Physical characteristics

Materijal kućišta:	ABS
Weight:	0.5 kg
Duljina:	210 mm
Width:	180 mm
Height:	45 mm
Boja:	bijela