

# Delock LTE UMTS GSM Antenna N jack 7 - 10 dBi directional wall and pole mounting outdoor

## Description

This antenna by Delock allows the usage of different LTE, GSM and UMTS bands indoors and outdoors. It is completely compatible to Bluetooth, WLAN 2.4 GHz, ZigBee, DECT, Z-Wave and LoRa 868 MHz / 915 MHz.



**Item no. 12435**

EAN: 4043619124350

Country of origin: China

Package: White Box

## Technical details

- Connector: 1 x N jack
- Frequency range:  
698 - 960 MHz  
1710 - 2700 MHz
- ZigBee, Bluetooth, WLAN 2.4 GHz, DECT, Z-Wave, LoRa 868 MHz / 915 MHz
- Antenna gain: 7 - 10 dBi
- Impedance: 50 Ohm
- Polarisation: vertical
- HBW horizontal beamwidth: 70°
- VBW vertical beamwidth: 55°
- VSWR: 1.8
- Transmission power: max. 100 W
- Housing material: ABS
- Protection class: IP65
- Colour: white
- Operating temperature: -40 °C ~ 70 °C
- Dimensions (LxWxH): ca. 210 x 180 x 45 mm

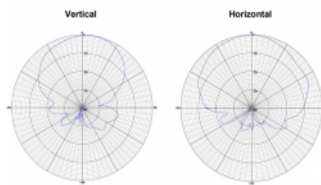
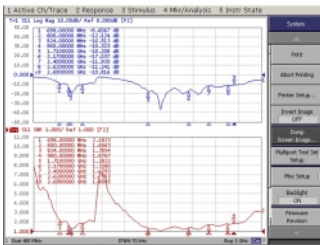
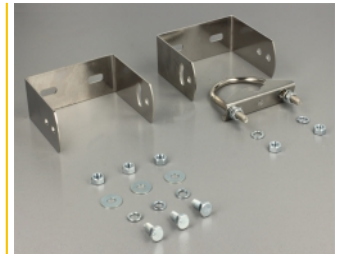
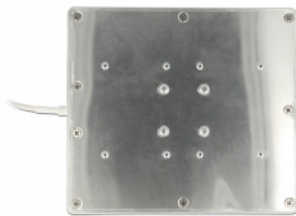
## System requirements

- Cable with N plug

## Package content

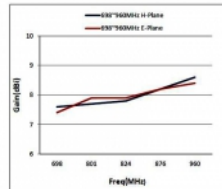
- LTE antenna
- Mounting material

## Images



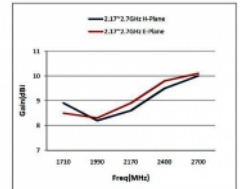
H-Plane	
MHz	dBi
600	5
900	6.5
960	7.1
Average: 6.3	

E-Plane	
MHz	dBi
600	6.8
900	7.1
Average: 6.2	



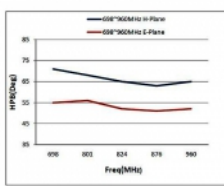
H-Plane	
MHz	dBi
1710	8.5
2170	8.6
2400	9.5
2700	10
Average: 9.25	

E-Plane	
MHz	dBi
1710	8.5
2170	8.5
2400	9.5
2700	10.1
Average: 9.32	



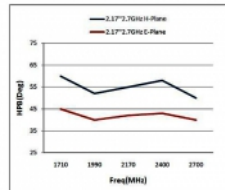
H-Plane	
MHz	HPBW(Deg)
600	71
900	68
960	65
Average: 68	

E-Plane	
MHz	HPBW(Deg)
600	55
900	56
960	52
Average: 54.3	



H-Plane	
MHz	HPBW(Deg)
1710	65
2170	55
2400	58
2700	50
Average: 55.7	

E-Plane	
MHz	HPBW(Deg)
1710	45
2170	42
2400	43
2700	40
Average: 42.5	



## Interface

connector:	1 x N female
------------	--------------

## Technical characteristics

Frequency range:	1710 - 2700 MHz 698 MHz - 960 MHz
Gain:	7 - 10 dBi
Beam width horizontal:	70°
Beam width vertical:	55°
Impedance:	50 Ω
Operating temperature:	-40 °C ~ 70 °C
Polarisation:	vertical
Power handling:	100W
VSWR:	1,8

## Physical characteristics

Housing material:	ABS
Weight:	0.5 kg
Length:	210 mm
Width:	180 mm
Height:	45 mm
Colour:	white