

# Delock LTE antenna SMA muška 7 - 9 dBi usmjerena s kabelom za povezivanje (RG-58, 5 m) bijela vanjska

## Opis

Ova Delock LTE antena omogućuje vam uporabu različitih LTE opsega na otvorenim i u zatvorenim prostorima. U potpunosti je usklađena za GSM, UMTS, Bluetooth, WLAN 2,4 GHz, ZigBee, DECT i Z-Wave.



### Predmet br. 12001

EAN: 4043619120017

Zemlja podrijetla: China

Pakiranje: White Box

## Tehnički podaci

- Priključak: 1 x SMA muški
- Frekvencijski opseg: 698 - 960 MHz, 1710 - 2700 MHz
- GSM, UMTS, Bluetooth, WLAN 2,4 GHz, ZigBee, DECT, Z-Wave
- Pojačanje antene: 7 - 9 dBi
- Polarizacija: vertikalna
- Horizontalni kut snopa: 90°
- Vertikalnog kut snopa: 60°
- Impedancija: 50 ohma
- VSWR: 2,0
- Radna temperatura: -40 °C ~ 60 °C
- Materijal kućišta: ABS otporno na UV zrake
- Boja: bijela
- Mjere (DxŠxV): oko 290 x 210 x 65 mm
- Tip kabela: koaksijalni
- Vrsta kabela: RG-58
- Boja kabela: crna
- Slabljenje kabela: 0,5 dB @ 800 MHz po metru
- Promjer kabela: oko 5 mm
- Duljina kabela zajedno s priključkom: oko 5 m

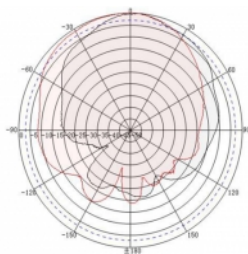
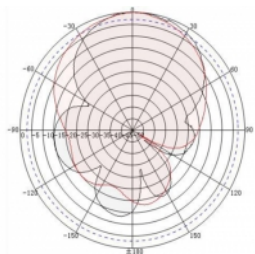
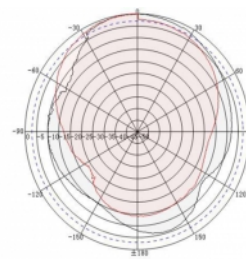
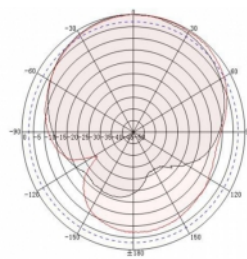
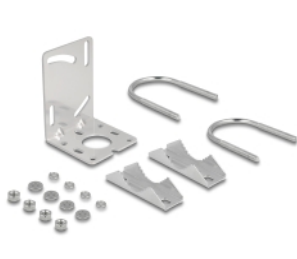
## Preduvjeti sustava

- Uređaj sa slobodnim SMA utičnicom

## Sadržaj pakiranja

- LTE antena
- Komplet za montažu na stup.

## Slike



## General

Mounting type:	pole
Protection category:	IP55
Suitable for indoor:	Yes (Da)
Suitable for outdoor:	Yes (Da)

## Interface

priključak:	1 x SMA utikač
-------------	----------------

## Technical characteristics

Frequency range:	1710 - 2700 MHz 698 MHz - 960 MHz
Antenna gain:	7 - 9 dBi
Beam width horizontal:	90°
Beam width vertical:	60°
Impedancijaa:	50 Ω
Radna temperatura:	-40 °C ~ 60 °C
Polarisation:	vertikal
Power handling:	50 W
VSWR:	1,8

## Physical characteristics

Weight:	1,2 kg
Cable category:	koaksijalni
Cable type:	RG-58
Cable attenuation:	0,5 dB @ 800 MHz po metru
Boja kabela:	crne
Duljina kabela:	5 m (incl. connectors)

Duljina:	29,0 mm
Width:	21 cm
Height:	6.5 cm
Boja:	bijela