

Delock Extension Socket Cube 3-way with childproof lock and USB PD 3.0 charger 20 W, 1.5 m cable, white

Description

The extension socket cube by Delock with USB charging function is suitable for convenient connection of various devices. A wall bracket is integrated, so that the socket can also be mounted on the wall or under the desk.

Make 3 out of 1

Whether in the kitchen, living area or office. There is a lack of free sockets. This multiple socket makes three out of one free grounded socket. The cube shape also provides a space-saving solution.

USB charger included

In addition to the sockets, one USB Type-C™ and one USB Type-A charging ports are provided. Common fast charging technologies, such as Power Delivery (PD) 3.0, are supported. This makes the charging process as safe and fast as possible.



Item no. 11502

EAN: 4043619115020

Country of origin: China

Package: Retail Box

Technical details

- Connectors:
 - Input:
 - 1 x plug CEE 7/7
 - Output:
 - 3 x socket CEE 7/3
 - 1 x USB Type-A female
 - 1 x USB Type-C™ female
- Rated current: 16.0 A / 250 V~
- Rated power: 3680.0 W
- Wall-mount option
- LEDs for status monitoring
- USB Charger:
 - Input: AC 250 V / 50 Hz / 0.5 A
 - Output power: max. 20.0 W total
 - USB-A: 5.0 V / 3.0 A, 9.0 V / 2.22 A, 12.0 V / 1.67 A

USB-CTM: 5.0 V / 3.0 A, 9.0 V / 2.22 A, 12.0 V / 1.67 A

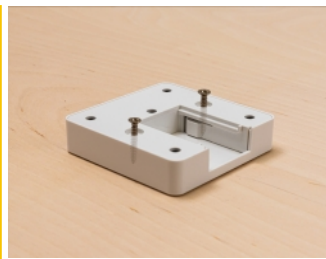
Over current protection, over heating protection, short circuit protection

- Average active efficiency 82.06 %
- Efficiency at low load (10 %) 78.21 %
- No-load power consumption 0.138 W
- Colour: white
- Cable length: ca. 1.5 m
- Dimensions (LxWxH): ca. 62 x 62 x 65 mm

Package content

- Socket cube
- 2 screws
- User manual

Images



General

Protection:	Input overvoltage protection Short circuit protection Overheating protection
-------------	--

Interface

Connector 1:	1 x plug CEE 7/7
Connector 2:	3 x Steckdose CEE 7/3 mit Kindersicherung
connector 3:	1 x USB Type-C™ Power Delivery female 1 x USB Type-A female

Physical characteristics

Length:	66 mm
Width:	66 mm
Height:	87 mm
Colour:	white

Power supply

Input:	AC 100 - 240 V / 50 - 60 Hz / 0.5 A
Output:	5.0 V / 3.0 A 12,0 V / 1,67 A 9,0 V / 2,22 A