

 RAID setting

DELOCK[®]
we move the world

External Enclosure for 2 x 2.5" SATA HDD / SSD with RAID + 3 Port USB 3.0 Hub



CE FCC



Product-No:42606
User manual no:42606-a
www.delock.com



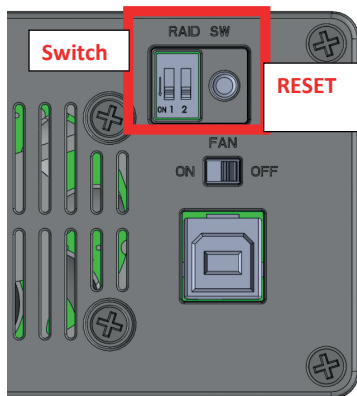
English

RAID setting

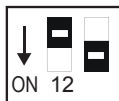
Note: If you use a new hard drive, please make sure that it is already formatted.

Use the DIP switch to set the suitable RAID mode.

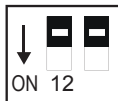
Further the reset button need to be pushed for around 5 seconds.



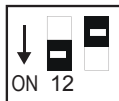
Normal



RAID1



RAID0



JBOD

**LED indication**

Situation			LED status		
			HDD1	HDD2	Power
PC S3/S4/S5			OFF	OFF	RED
USB, HDD1 & 2 connected			ON	ON	GREEN
Normal (PM)	HDD1 access		Flashing	ON	GREEN
	HDD2 access		ON	Flashing	GREEN
RAID 0			Flashing	Flashing	GREEN
RAID 1	Data Access		Flashing	Flashing	GREEN
	Rebuild	Online	Both, Flashing until finished		GREEN
		Offline	Both, Flashing until finished		GREEN
JBOD	HDD1 access		Flashing	ON	GREEN
	HDD2 access		ON	Flashing	GREEN
RAID mode change (reset button pressed)			Flashing	Flashing	GREEN