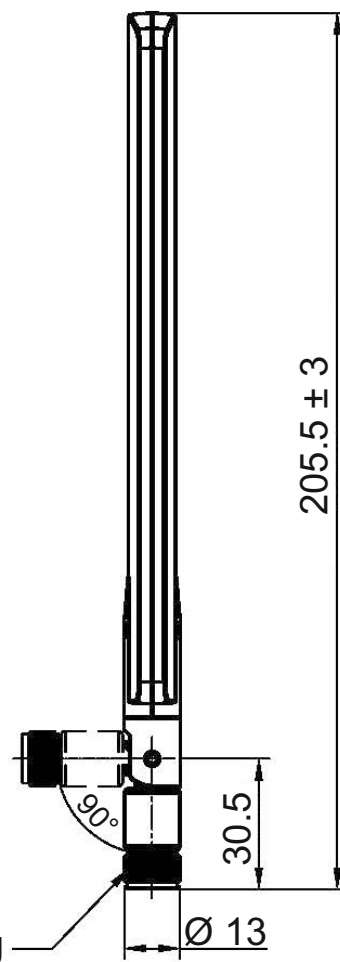
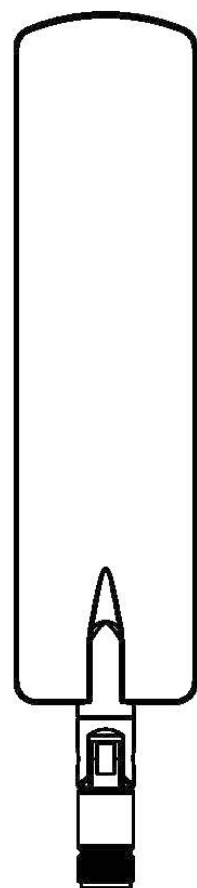
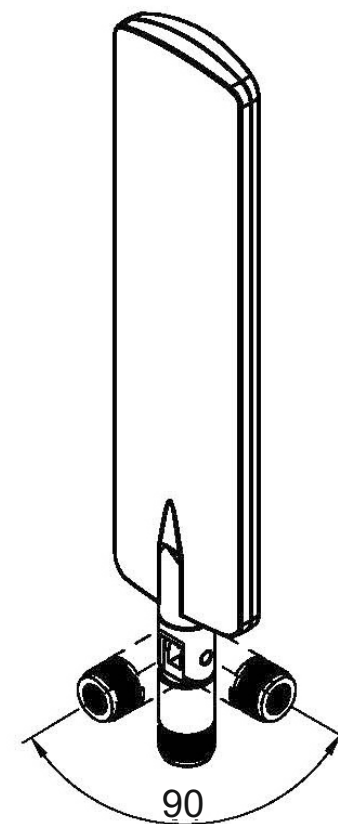


| <u>Electrical Properties</u> |                |               |
|------------------------------|----------------|---------------|
| Frequency Range              | 698-960 MHz    | 1710-2690 MHz |
| Impedance                    | 50 Ω           |               |
| V.S.W.R.                     | ≤ 4.5          | ≤ 3.5         |
| Radiation                    | Omni           |               |
| Gain                         | 2 dBi          |               |
| Polarization                 | Vertical       |               |
| <u>Mechanical Properties</u> |                |               |
| Whip                         | ABS            |               |
| Connector                    | Brass          |               |
| Operating Temp               | -20 °C ~ 65 °C |               |



SMA plug



|  |               |
|--|---------------|
| <b>DELOCK®</b><br>we move the world  |               |
| Title: LTE Antenna SMA plug 2 dBi<br>omnidirectional with tilt joint black |               |
| Item no.   | 89604         |
| Barcode  | 4043619896042 |

|            |                |
|------------|----------------|
| Date       | 2018 / 03 / 22 |
| Unit       | mm             |
| Projection |                |
| Rev        | A              |