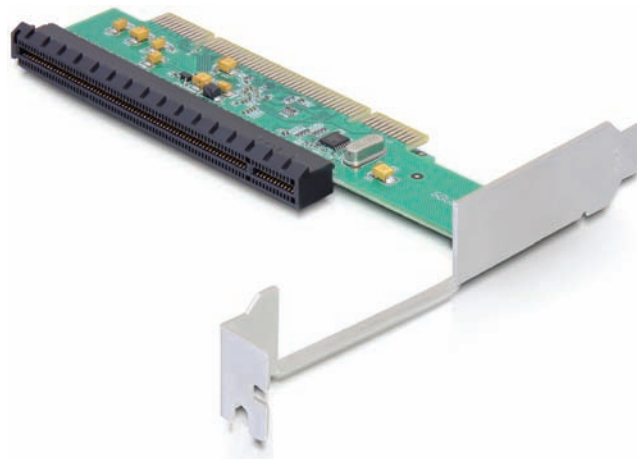


PCI to PCI Express x16 card

Description

Use this PCI card by Delock to convert your standard PCI slot into a PCI Express slot. Simply remove the bracket from your PCIe card and insert it into the PCI converter card. Ports of the PCIe card above the opening can not be used.



| | |
|-----------------------|---------------|
| Ref. | 89276 |
| EAN | 4043619892761 |
| Country of origin | China |
| Customs tariff number | 84733020 |

Images

Specification

- PLX chip set
- PCI 32 bit card for PCI Express x1, x4, x8 or x16
- Dimension-aperture: 4,8 x 1,7 cm
- Plug & Play

System requirement

- Windows XP/XP-64/Vista/Vista-64/7/7-64, Linux
- PC with a free PCI card slot

Package content

- PCI to PCI Express x16 card

Package

- Retail box