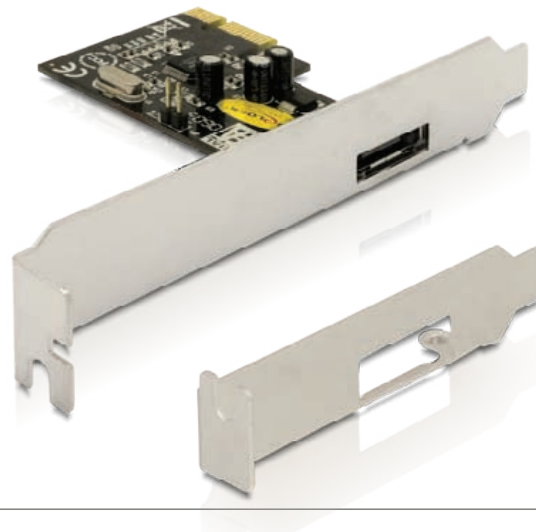




## PCI Express > 1 x eSATA

### Description

The Delock PCI Express card expands your PC by one external eSATA II Port. You can connect SATA devices like hard drives, adapter etc. to the card.



Ref. 89119  
EAN 4043619891191

### Images



### Specification

- 1 x eSATA II specification
- Data transfer rate: SATA II up to 3 GB/s  
x1 PCI Express up to 2.5 Mbps
- PCI Express x1 standard
- Compliant with PCI Express 1.0a specification
- Supports hard disk with Native Command Queue (NCQ) feature
- Supports Serial ATA AHCI specification Rev. 1.0
- Hot Plug

#### System requirements

- Windows 2000/XP/XP-64/Server-2003/Server-2003-64/  
Vista/Vista-64/7, Linux
- PC with one free PCI Express Slot

#### Package content

- PCI Express card
- Low Profile Bracket
- Driver CD
- User manual

#### Package

- Blister