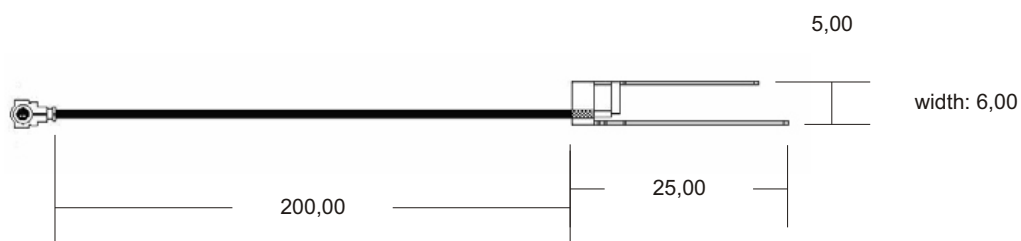
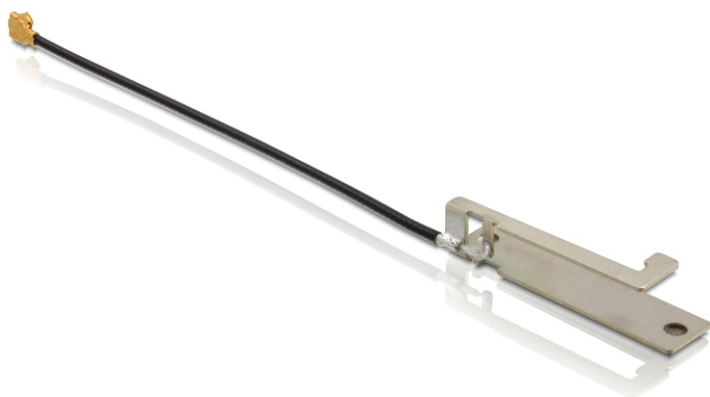


# Specification

## 86151

Delock industry WLAN antenna installable 701 2,4 Ghz

EAN: 4043619861514



date: 08/24/2009

# Specification

## 86151

Delock industry WLAN antenna installable 701 2,4 Ghz

### Electrical specification

Frequency range	2400 Mhz - 2500 Mhz
Peak gain	< 3 dBi
Average gain	> -5 dBi
VSWR	2,0:1 max
Power handling	1W
Impedance	50 Ohm
Connector	I-PEX
Cable	200 mm 1,13 mm black

### Environmental specification

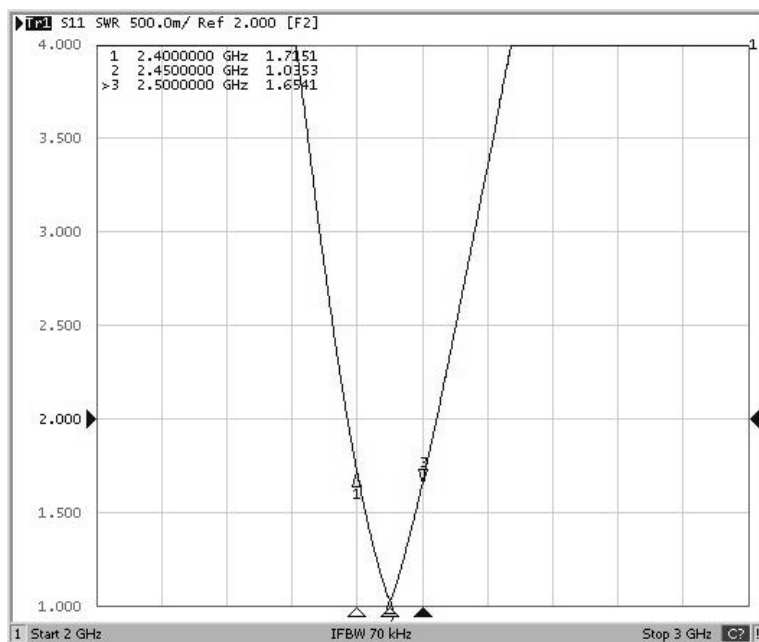
Temperature	-10°C ~ 55°C
Composite	80% @ -10°C ~ 55°C
Dimensions	25x6x5mm

# Specification

## 86151

Delock industry WLAN antenna installable 701 2,4 Ghz

### Antenna VSWR



# Specification

## 86151

Delock industry WLAN antenna installable 701 2,4 Ghz

### Embedded Antenna Installation Guide

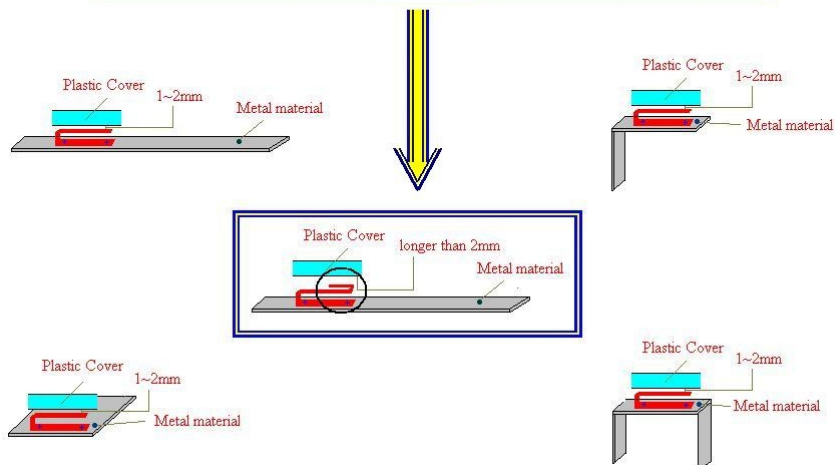
1. Antenna attach on Metal Plane by Screw. (Nicer for Drop Test)

2. Antenna attach on Metal Plane by Conductive Tape.

\* Metal Plane Size more than 25mm \* 25mm : 625 mm<sup>2</sup>

\* The Distance between Antenna Radiator and Plastic Cover is 1~2mm.

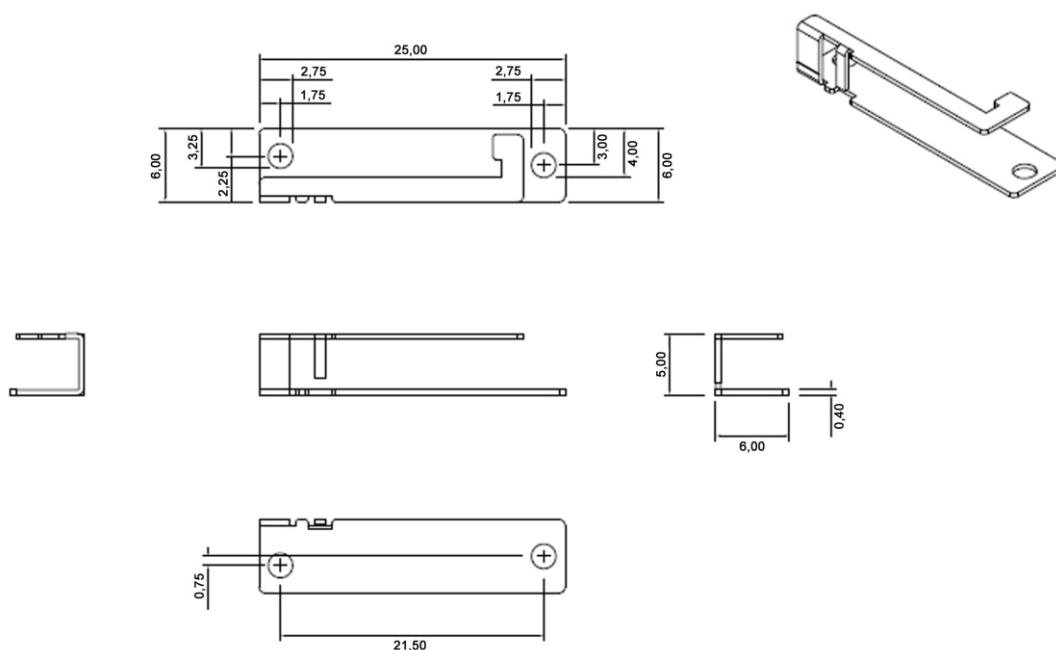
\* If the Distance is longer than 2mm, we have another antenna (longer radiator)



# Specification

## 86151

Delock industry WLAN antenna installable 701 2,4 Ghz



86135

Unit: mm

# Specification

## 86151

Delock industry WLAN antenna installable 701 2,4 Ghz

